

# Excess Mortality of Young Men - Cohort Analysis

Petr Mazouch

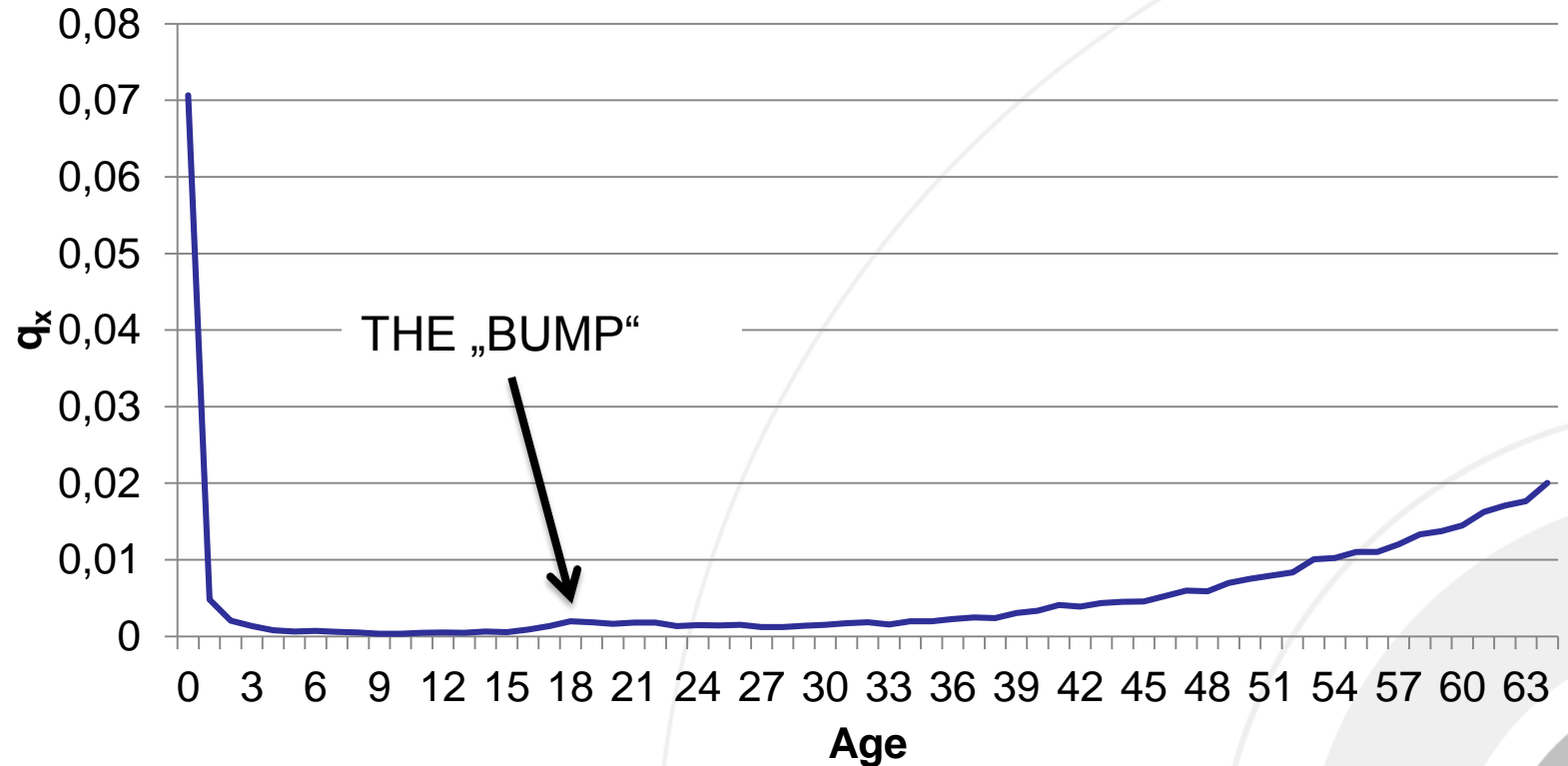
University of Economics, Prague

Dept. of Economic Statistics

# Introduction

- Young adult excess mortality (YAEM) – well known demographic fact
- Deeply studied by Remund (2014) or Remund and Camarda (2015) or Vaupel and Yashin (1985 or 2006)
- Causes still unclear
- Is the „bump“ still here?
- Is it remarkable in cohort perspective?

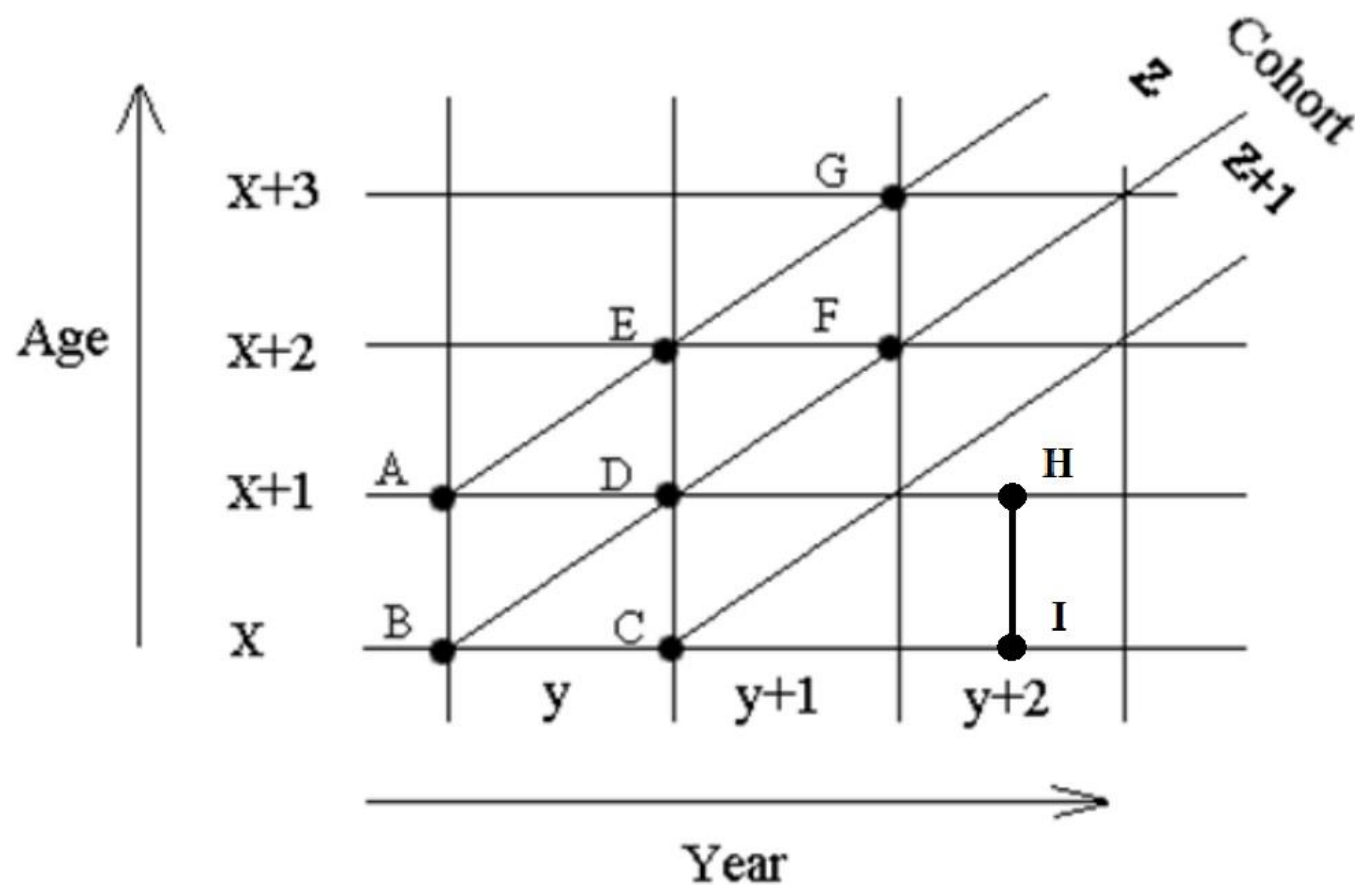
# Probability of dying, CZ, males, cohort 1950



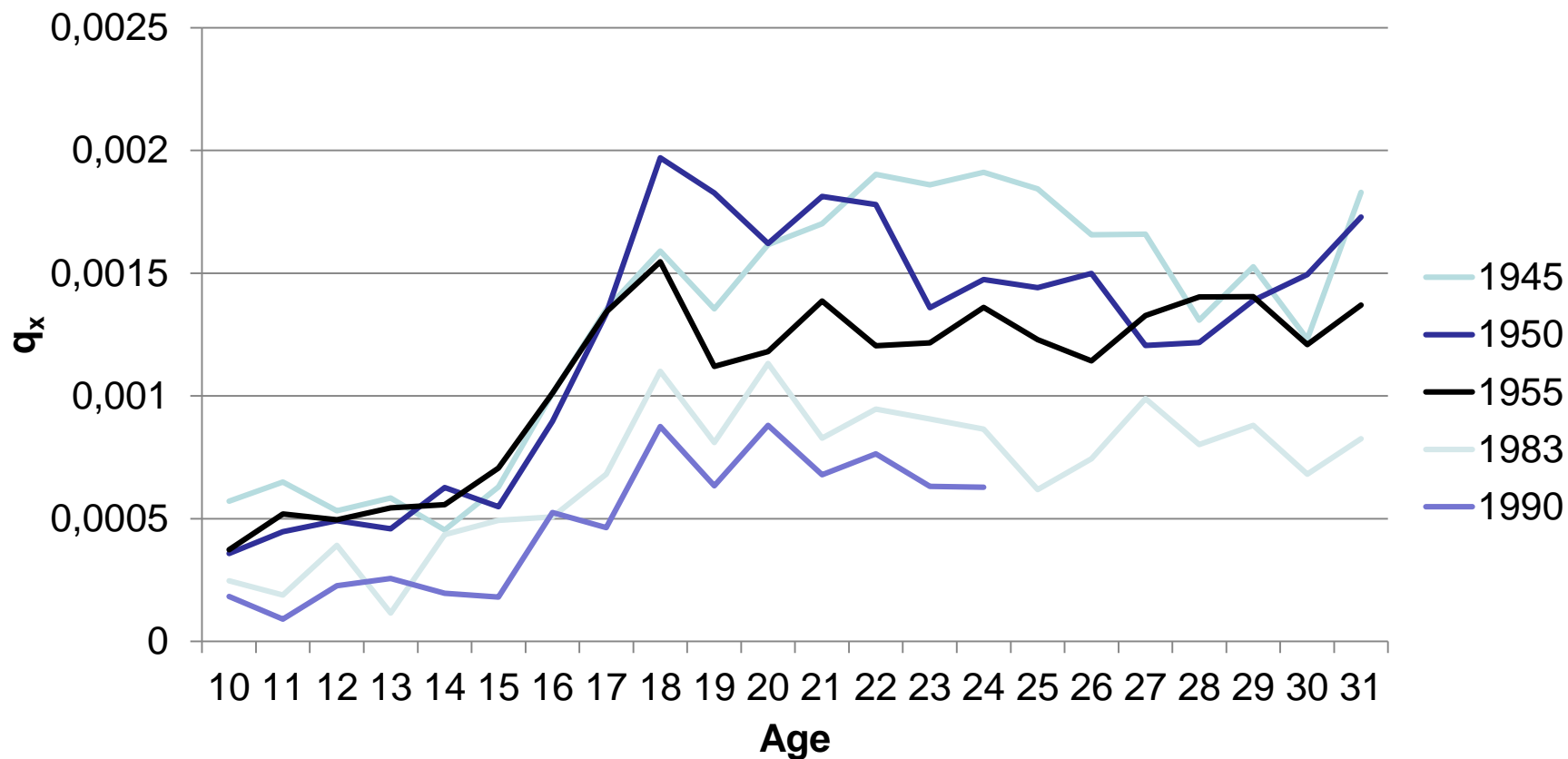
# Data

- HMD ([www.mortality.org](http://www.mortality.org))
- Czech Republic
- Cohorts 1936-1984
- Age 10-31

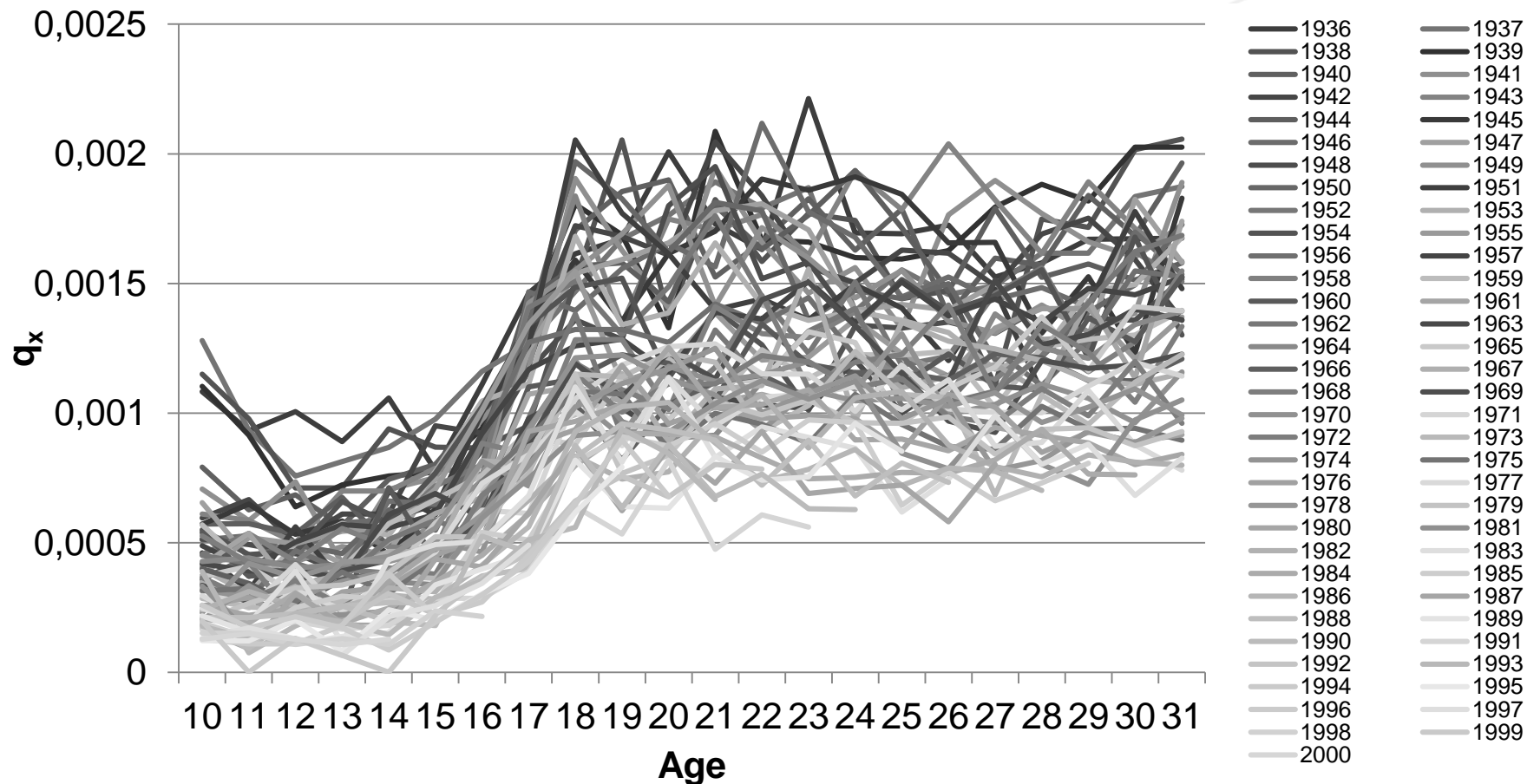
# Lexis diagram



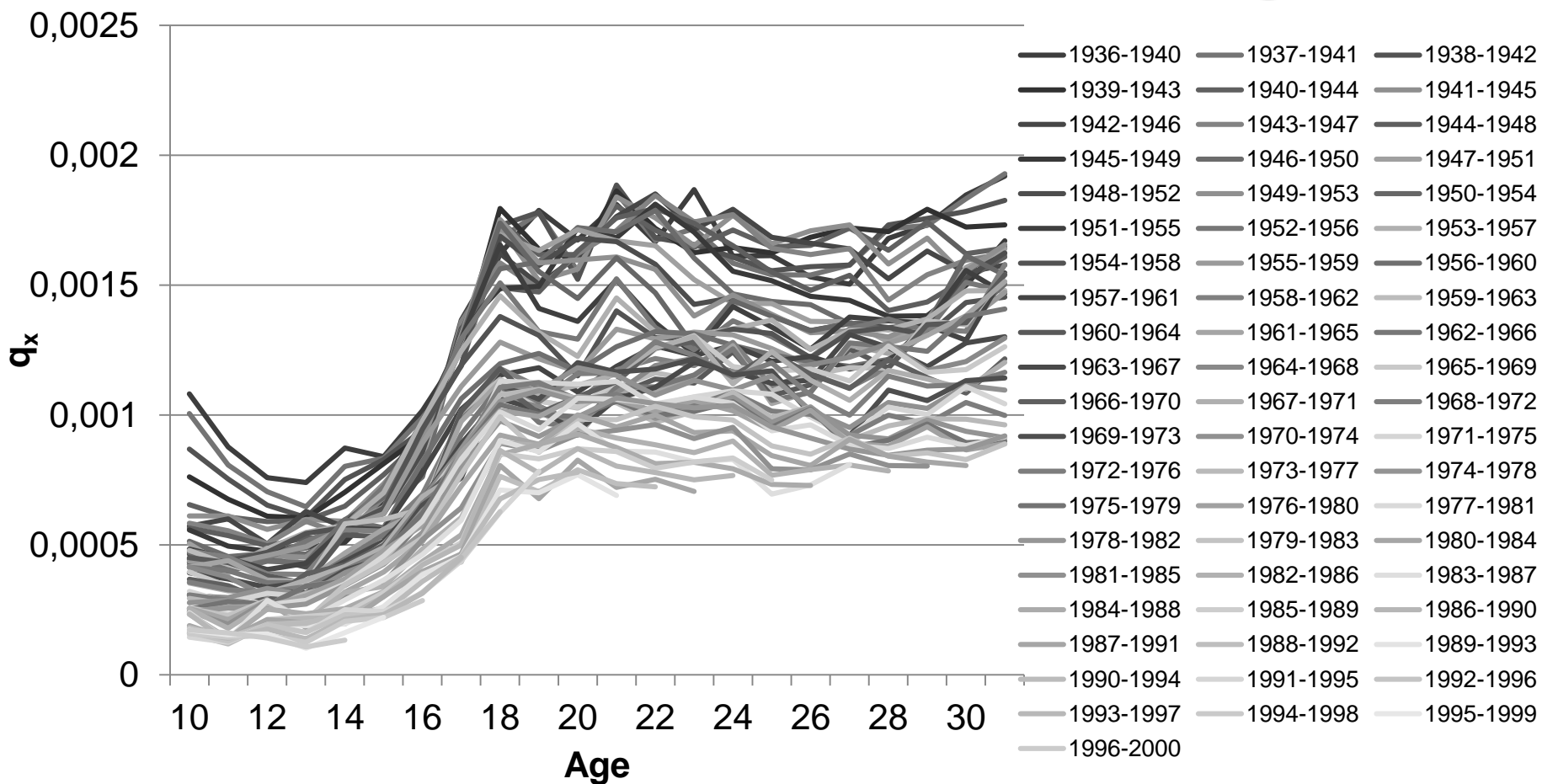
# Probability of dying, CZ, males, cohorts 1945, 1950, 1955, 1983, 1990



# Probability of dying, CZ, males, cohorts 1945-1999

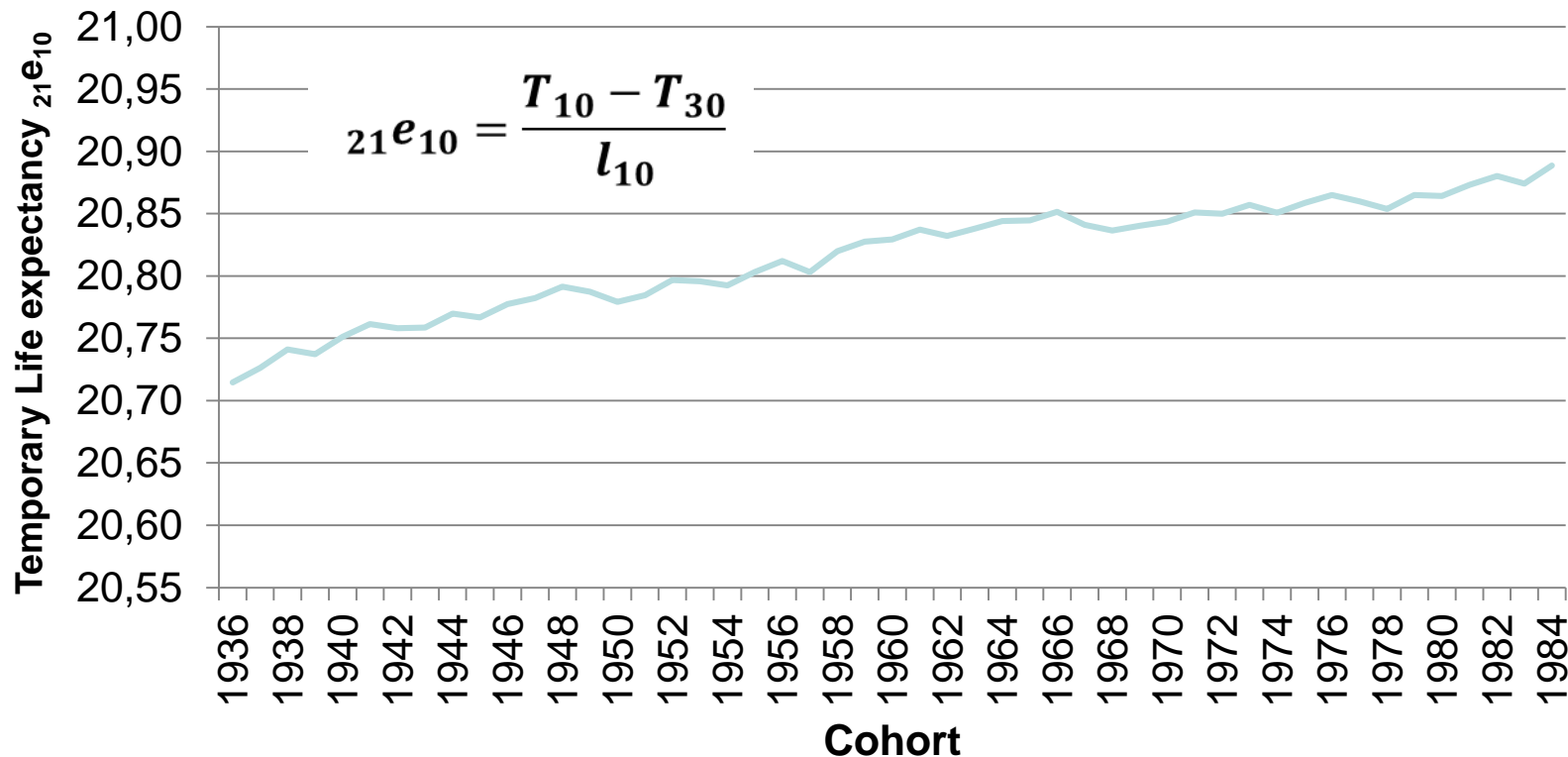


# Probability of dying, CZ, males, cohorts 1945-1999, 5-year moving averages

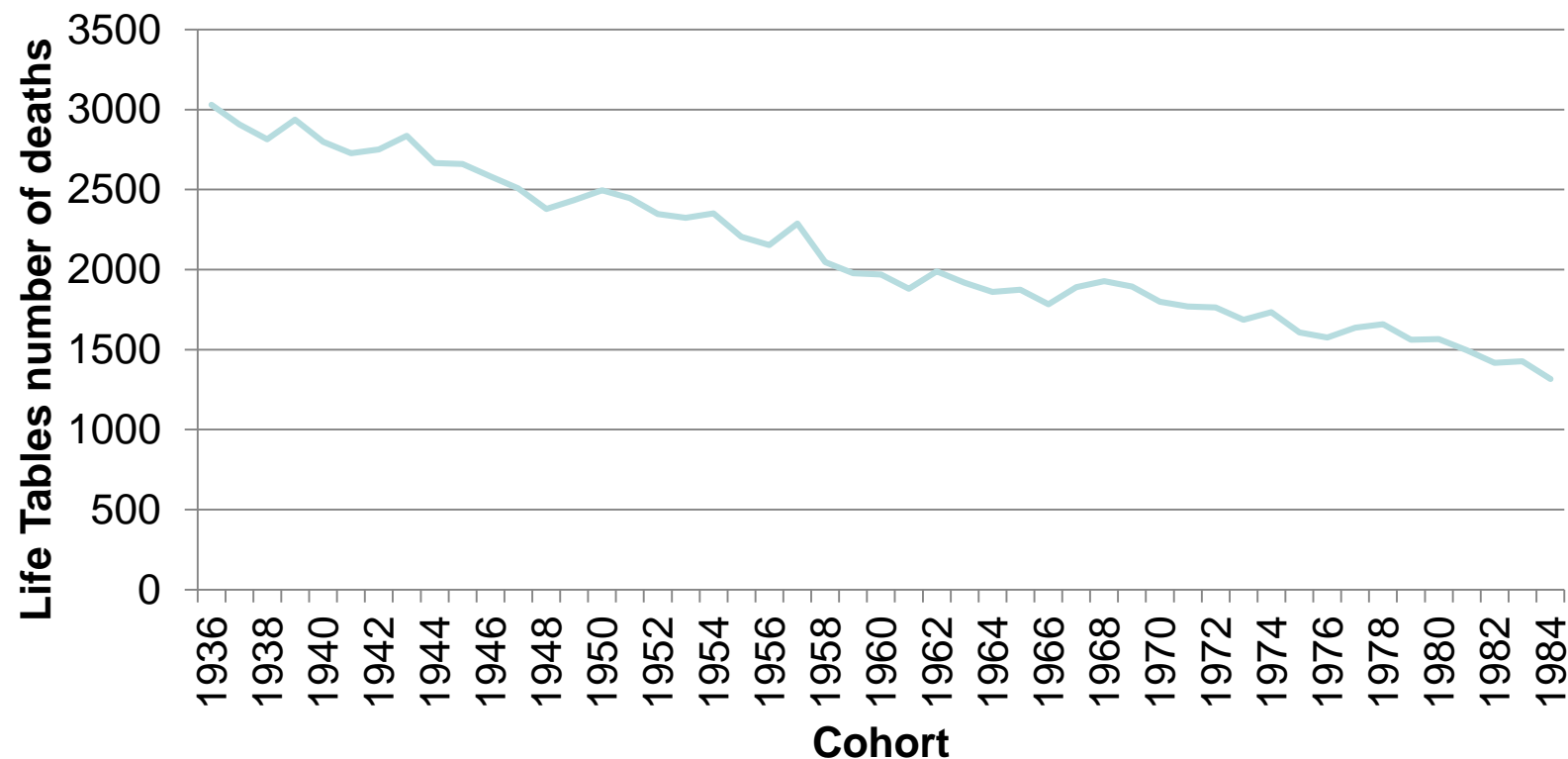




# Temporary Life Expectancy ${}_{21}e_{10}$ , males, CZ, cohorts 1936-1984



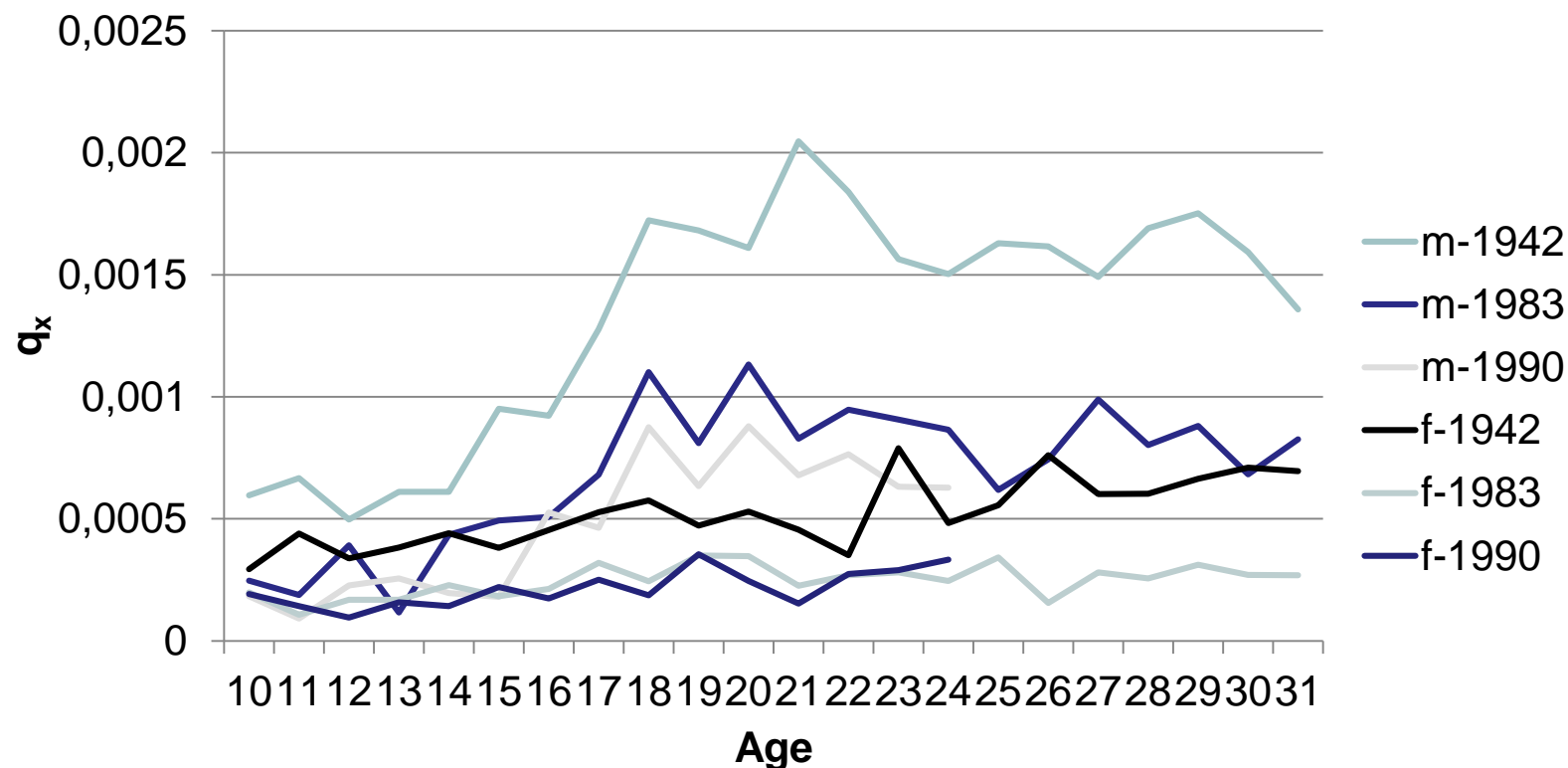
# Life Tables number of deaths between age 10 and 31, $l_{10}=100,000$ , CZ, males, cohorts 1936-1984



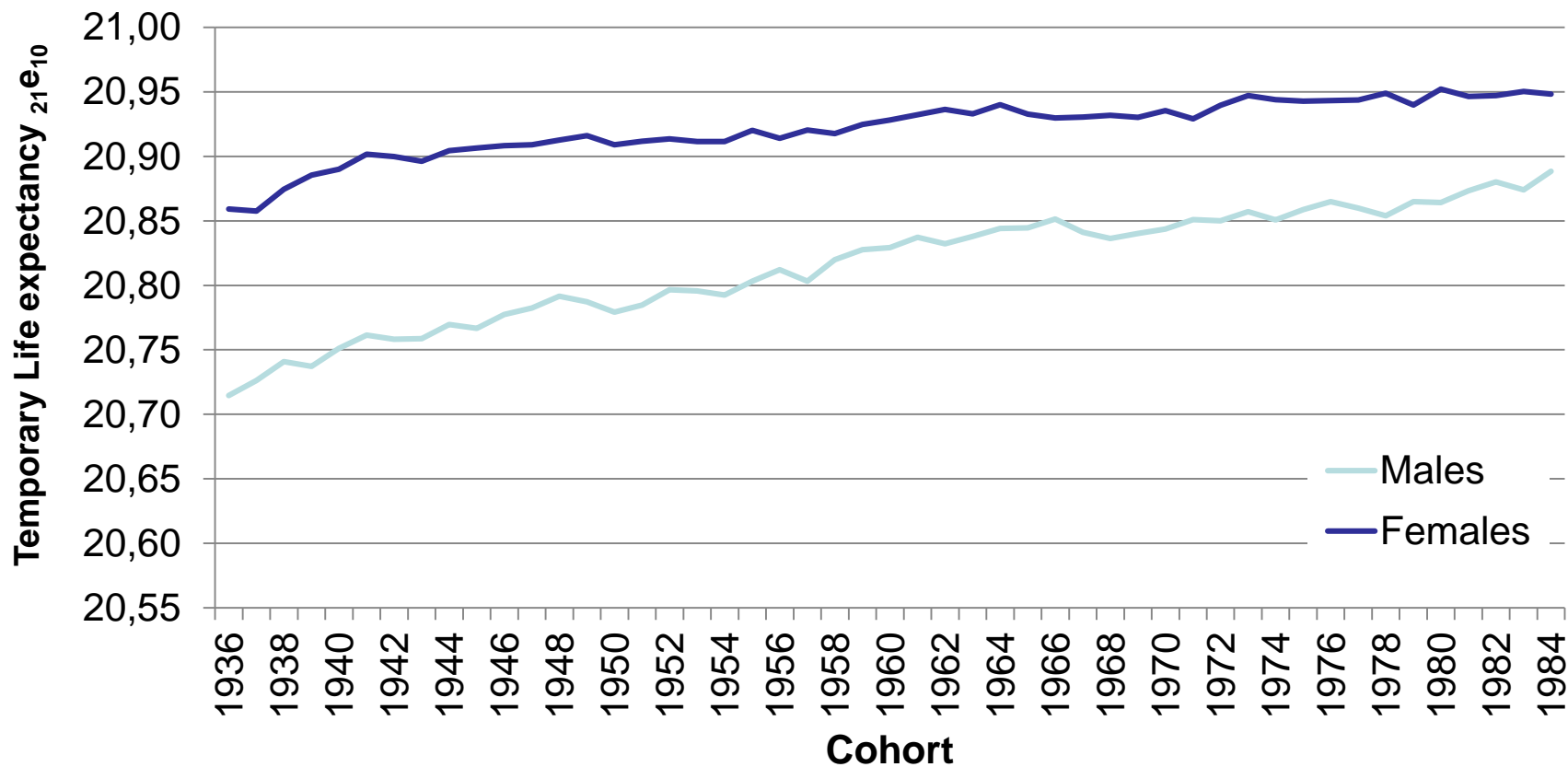
# What about females?



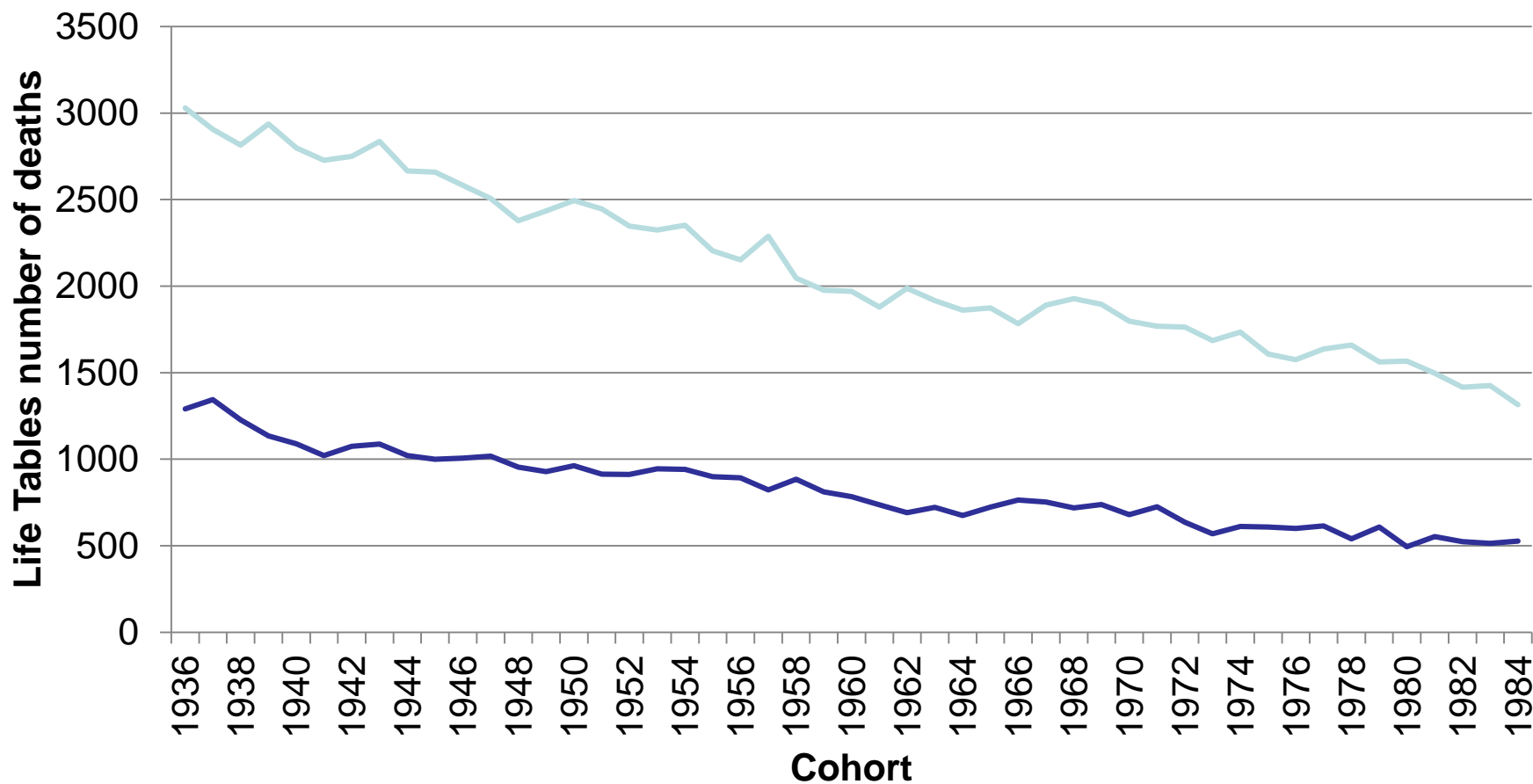
# Probability of dying, CZ, males, females, cohorts 1942, 1983, 1990



# Temporary Life Expectancy ${}_{21}e_{10}$ , males, females, CZ, cohorts 1936-1984



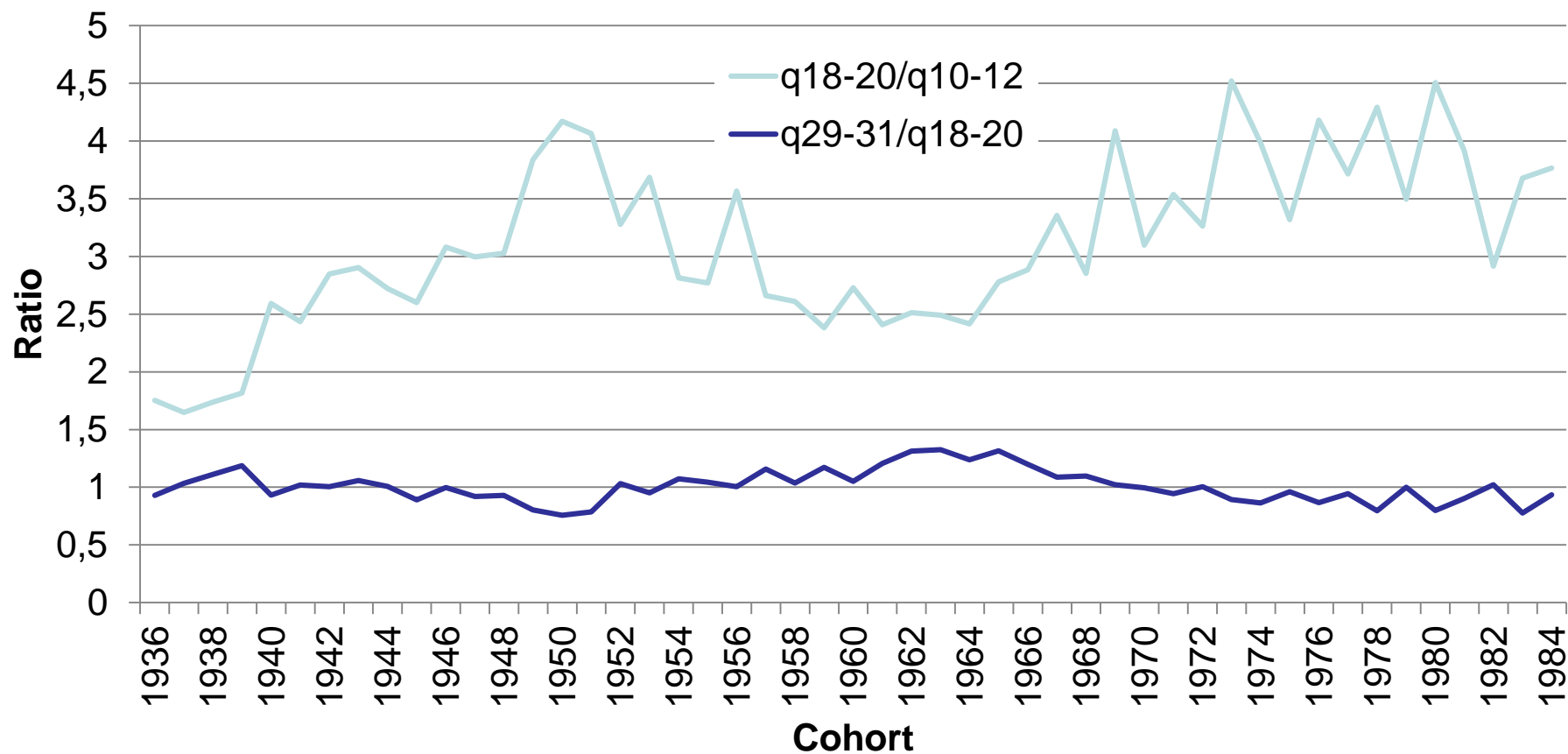
# Life Tables number of deaths between age 10 and 31, $l_{10}=100,000$ , CZ, males, females, cohorts 1936-1984



**It seems that „bump“ is  
not here anymore.**

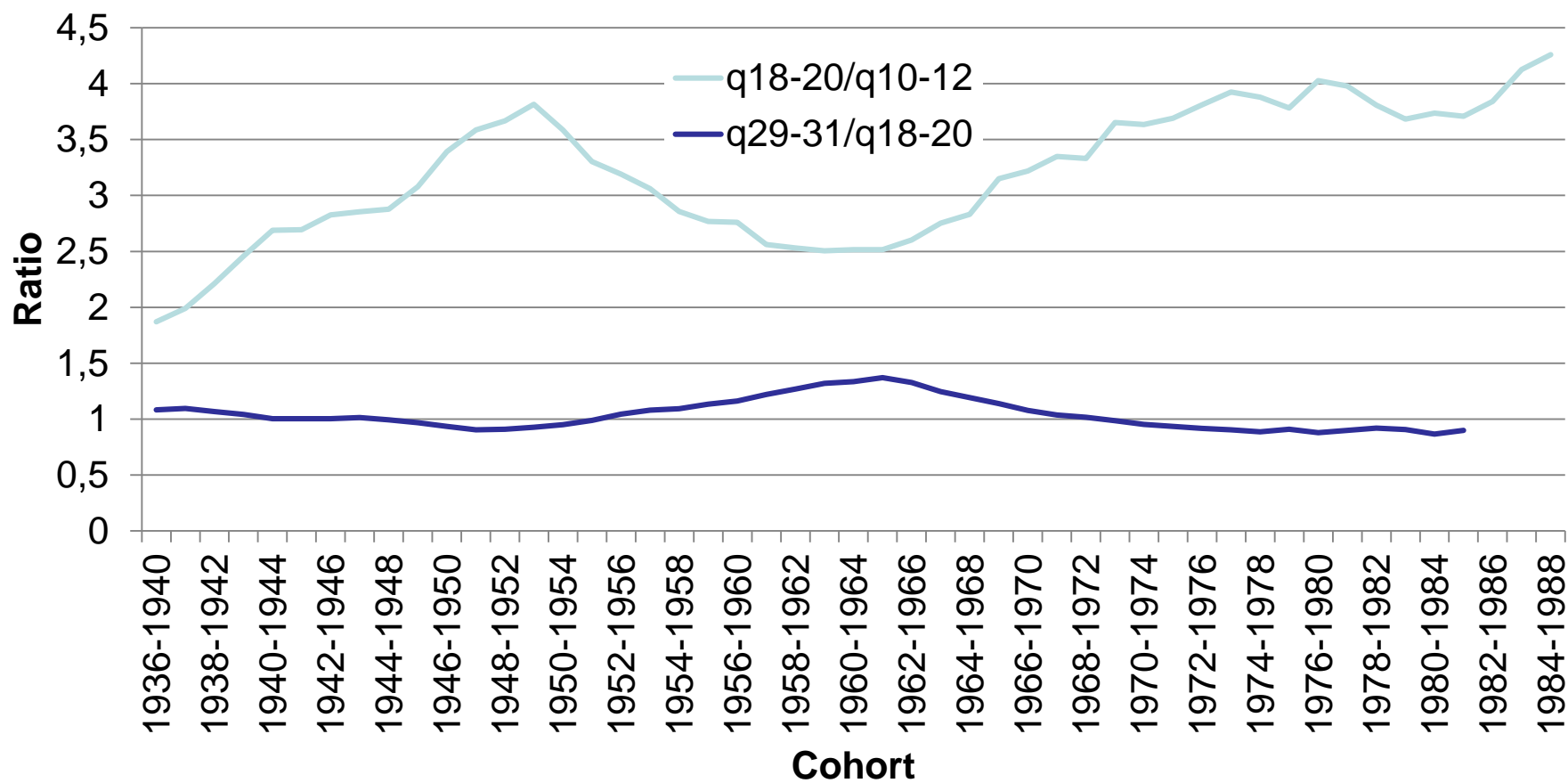
**But is that true?**

# Index of increases of mortality between age 10-12 to 18-20 and 18-20 and 28-31, males, CZ, cohorts 1936-1984

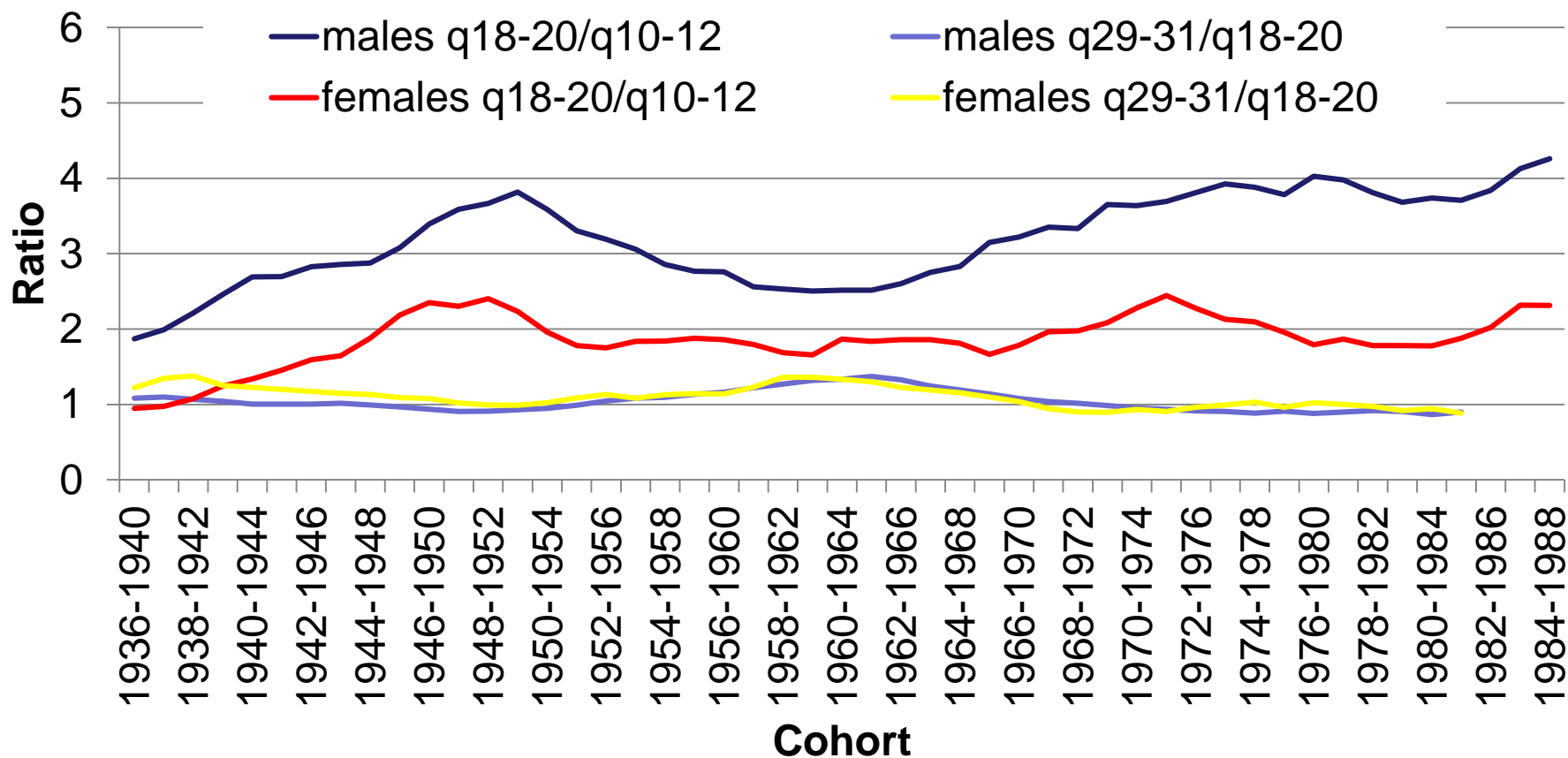




# Index of increases of mortality between age 10-12 to 18-20 and 18-20 and 2-31, males, CZ, cohorts 1936-1984, moving average



# Index of increases of mortality between age 10-12 to 18-20 and 18-20 and 28-31, males, females, CZ, cohorts 1936-1984, moving average



Petr Mazouch  
mazouchp@vse.cz

