

**9th Demographic Conference of "Young Demographers" Actual
Demographic Research of Young Demographers (not only) in Europe**

15th and 16th February 2018

Differentiation of emigration processes depending on demographical factors in Latvia

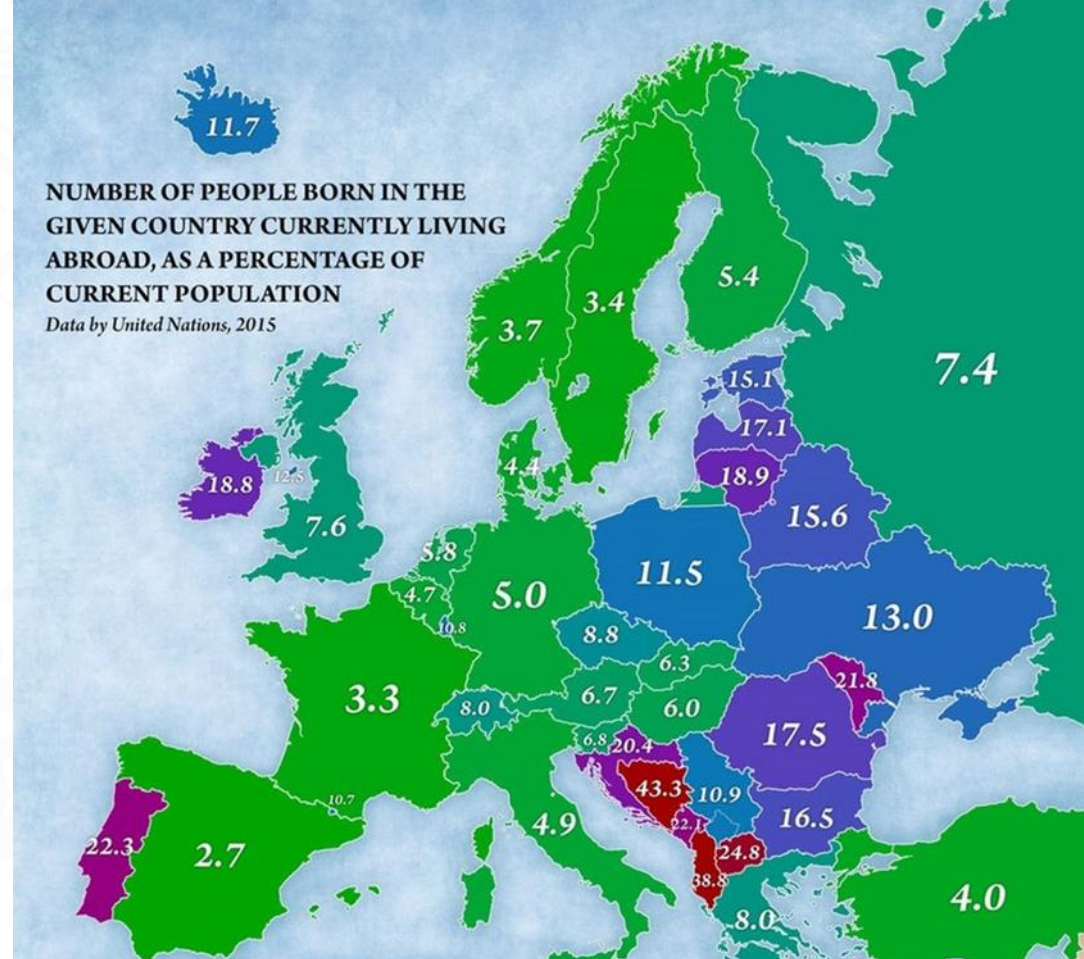


Kristīne Lece
Demography DSP, University of Latvia

Introduction

Major migration problems in 2018:

- in Nordic countries and Western Europe - immigration crisis;
- in Central and Eastern Europe and the Baltic states – emigration.



<https://jakubmarian.com/tag/demographics-maps/>



Questions

What are these people? Why do they emigrate?



**LATVIJAS
UNIVERSITĀTE**
ANNO 1919

UNIVERSITY OF LATVIA

The aim of the research

- To identify the socioeconomic, demographic and regional factors of a potential international emigrant;

The main reason for emigration today - economic factors;

- To predict the probability of emigration;
- To study the role of
 - ✓ age, gender,
 - ✓ educational level,
 - ✓ place of residence,
 - ✓ marital status,
 - ✓ number of childrenin emigration processes from Latvia.



LATVIJAS
UNIVERSITĀTE
ANNO 1919

UNIVERSITY OF LATVIA

Data and methodology

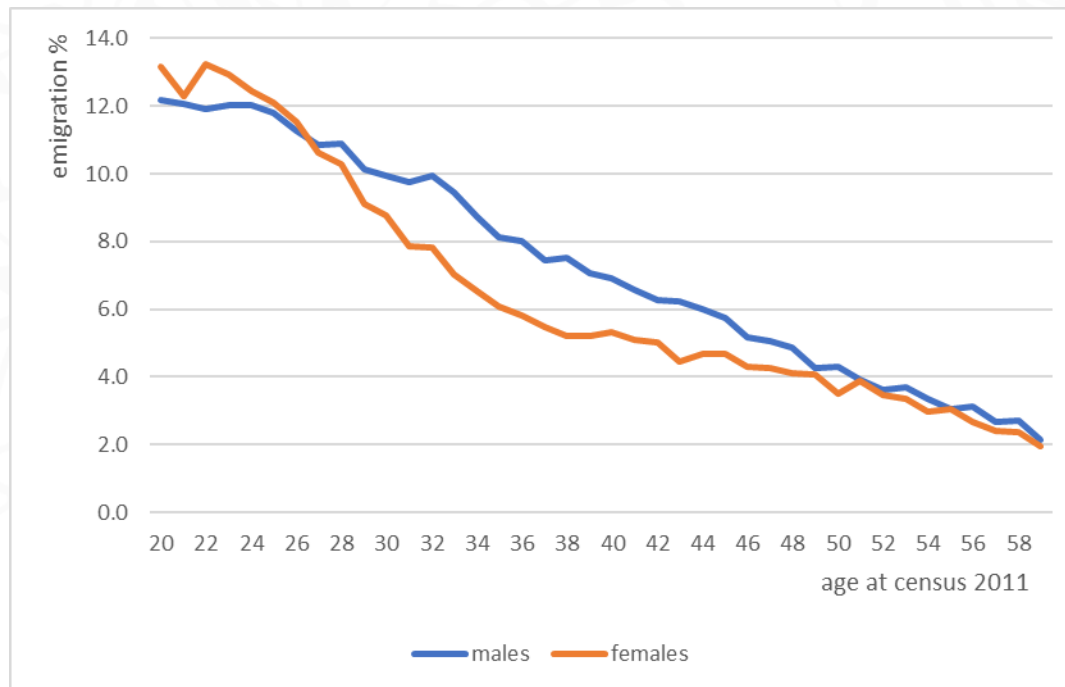
- Data analyzed on individual level;
- Includes persons who were 20 to 59 years old in the Population Census 2011 and have indicated their level of education;
- Point of reference - the legal status of a person on January 1, 2017;
- Data from Population Register of the Office of Citizenship and Migration Affairs, Ministry of Education and Science, etc.;
- Persons who died (2.9%) are not included.

Data and methodology

- Why the age group of 20 to 59 years?
 - ✓ Until the age of 19, the level of education (Population Census 2011) is practically the same;
 - ✓ From the age of 60, the number of emigrants is relatively small.
- 1 121 983 people were examined, of which:
 - ✓ 1 043 479, or **93%**, live in Latvia;
 - ✓ 78 504, or **7%**, have emigrated.

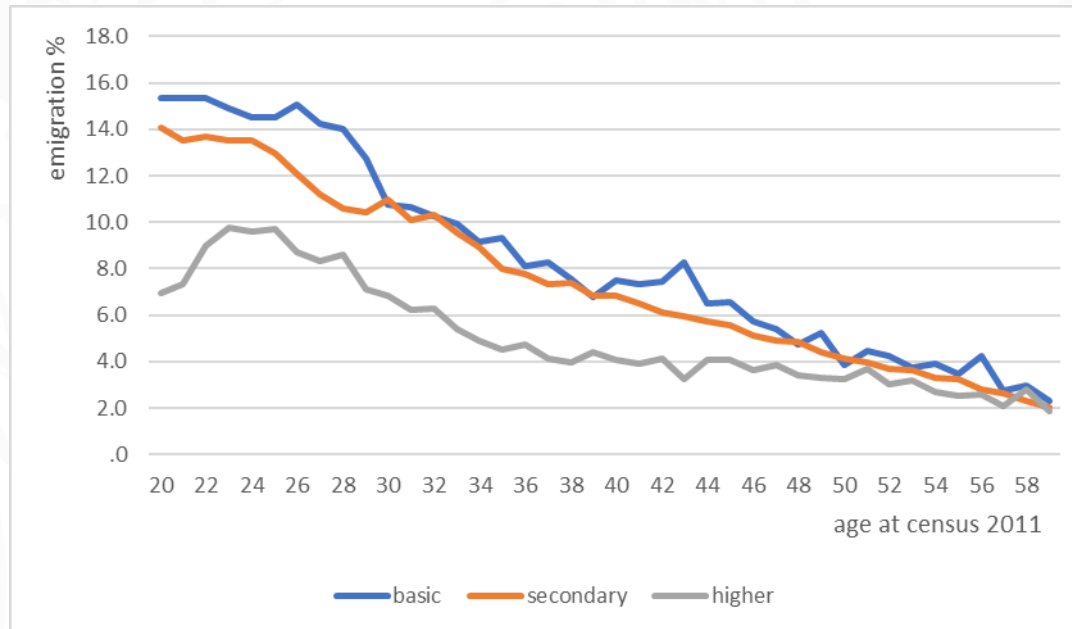


Likelihood of emigration depending on age and gender



- Young people are the largest group of emigrants;
- Age group 20 – 26: women emigrate more than men;
- Age group 27- 48: men emigrate more than women;
- Age group 49 – 59: emigration is about the same.

Likelihood of emigration depending on age and educational level



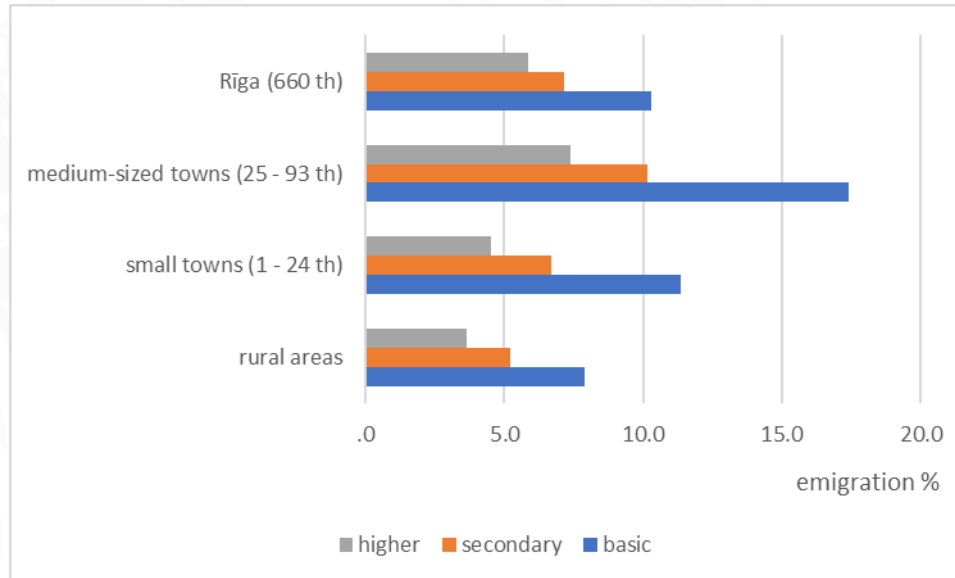
Lower education level increases the likelihood of emigration in all age groups.



LATVIJAS
UNIVERSITĀTE
ANNO 1919

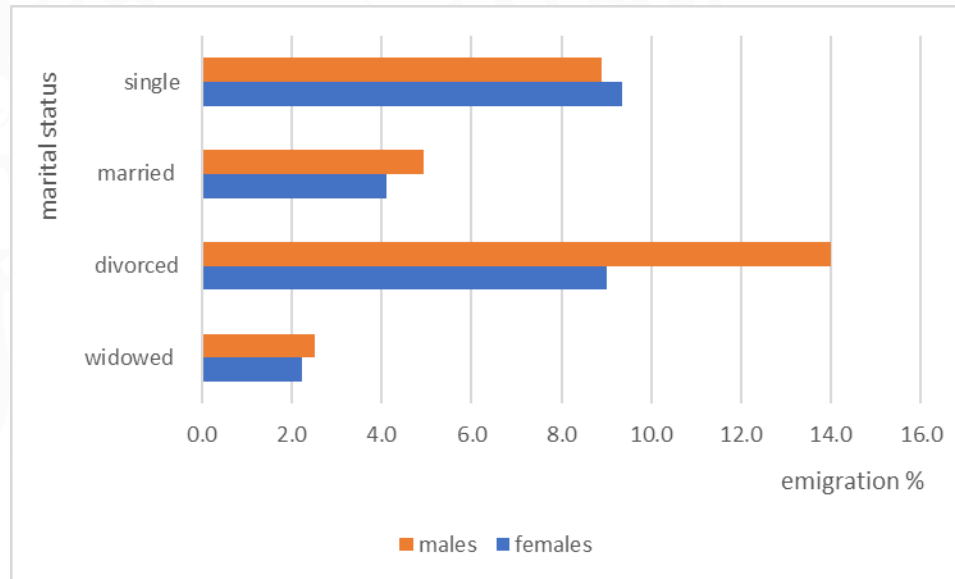
UNIVERSITY OF LATVIA

Likelihood of emigration depending on educational level and type of residence



Residents of medium-sized towns (25 - 93 thousand people) are more likely to emigrate than residents of Riga, small towns, or rural areas.

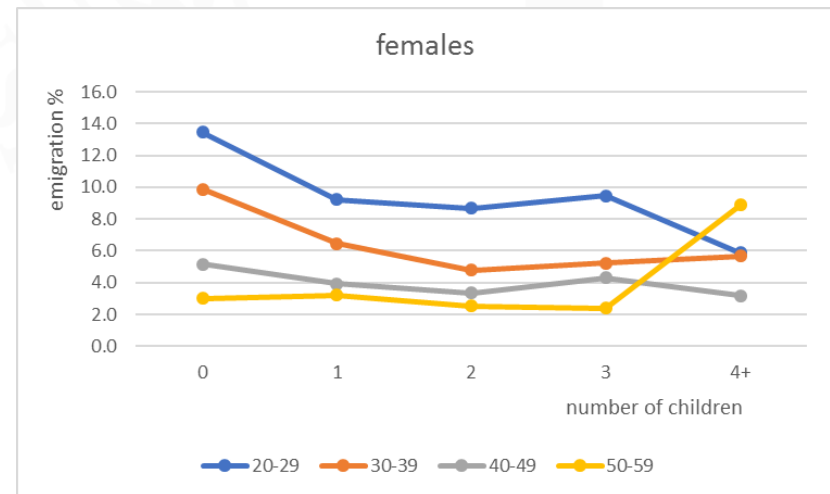
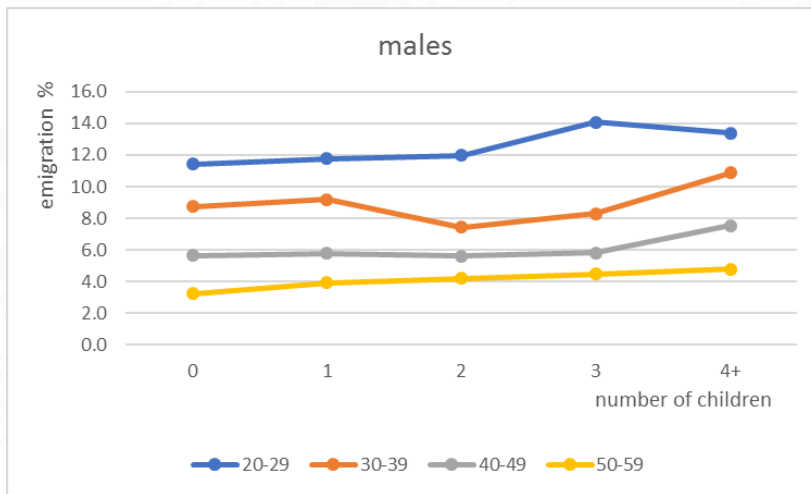
Likelihood of emigration depending on gender and marital status



- The largest likelihood of emigration is for divorced persons, especially for men;
- Widows emigrate the least; however, the marital status correlates with age.

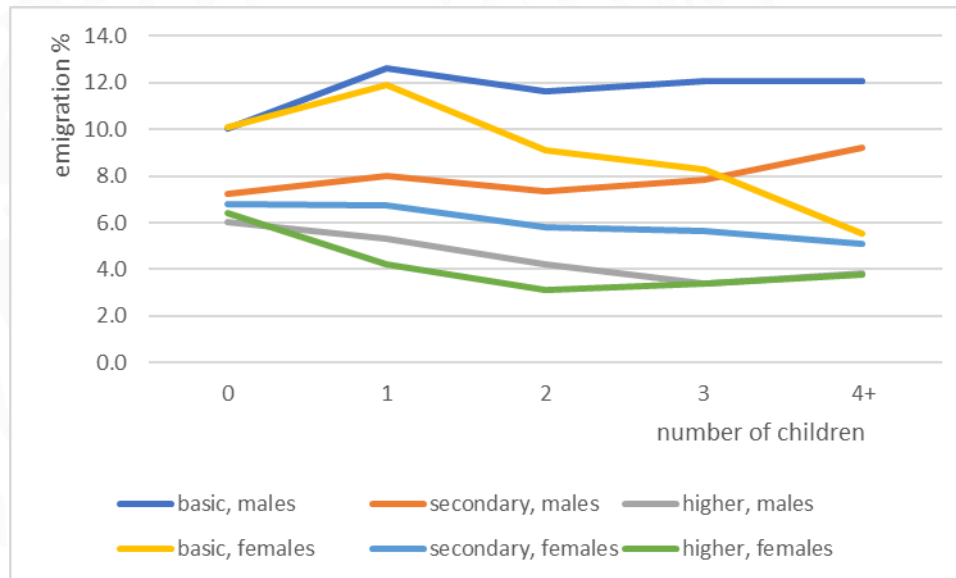


Likelihood of emigration depending on gender, age, and number of children



- Research includes the number of children up to 18 years of age;
- Men aged 20 to 39 with more than 3 children are more likely to emigrate for economic reasons;
 - For women, a larger number of children reduces the likelihood of emigration, except in age group over 50 when children have already grown up.

Likelihood of emigration depending on educational level and number of children



- Women with basic education have a larger likelihood to emigrate, but, as the number of children grows, they emigrate less;
- In this case, the father of children might be the main earner.



Conclusions

- The group with the largest likelihood of emigration includes 20 - 29 year old persons with basic education;
- Lower educational level and divorce increases the likelihood of emigration;
- People who live in medium-sized towns are more likely to emigrate than residents of Riga, small towns or rural areas;
- The impact of the number of children differs depending on the education level;
- The greatest impact on the likelihood of emigration regarding the number of children is observed in women with basic education.

Key references

- Mieriņa, I., Hazans, M., et al. *The Emigrant Communities of Latvia: National Identity, Transnational Relations, and Diaspora Politics*. Riga, 2017
- Indāns, I. Characteristics of International Migration in a European Context. (edited by P. Zvidriņš) *Depopulation in Latvia: development, causes and consequences*. Riga, 2011
- Apsīte Beriņa, E. *Transnational migration in EU: Migration of Latvian residents to UK*. Riga, 2013
- Central Statistics Bureau of Latvia (CSB) database. Available at: <http://dati.csb.gov.lv> [Accessed on 16.10. 2017].
- <https://jakubmarian.com/tag/demographics-maps/>





Paldies! Děkujeme!



**LATVIJAS
UNIVERSITĀTE**
ANNO 1919

UNIVERSITY OF LATVIA