

9th Demographic Conference of "Young Demographers" Actual Demographic
Research of Young Demographers in Europe

15 th and 16 th February 2018

Evaluation of economical activity and educational attainment of Latvian population through administrative and sample surveys' data

Anna Kluša
Demography DSP,
University of Latvia

Contents

1. Population of Latvia
2. Labour market data sources in Latvia
3. Employment and unemployment in Latvia
4. Labour status and educational level



LATVIJAS
UNIVERSITĀTE
ANNO 1919

UNIVERSITY OF LATVIA

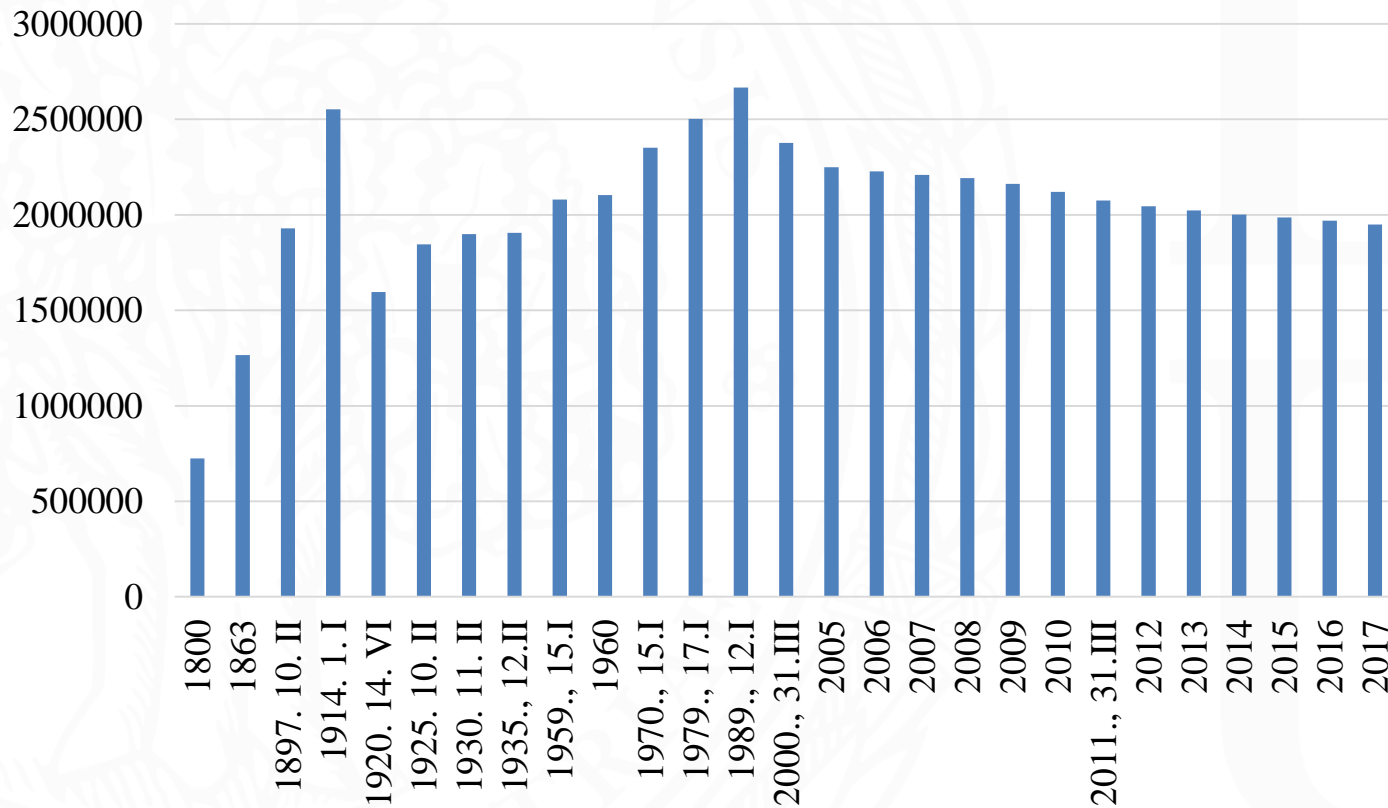
Where is Latvia?



**LATVIJAS
UNIVERSITĀTE**
ANNO 1919

UNIVERSITY OF LATVIA

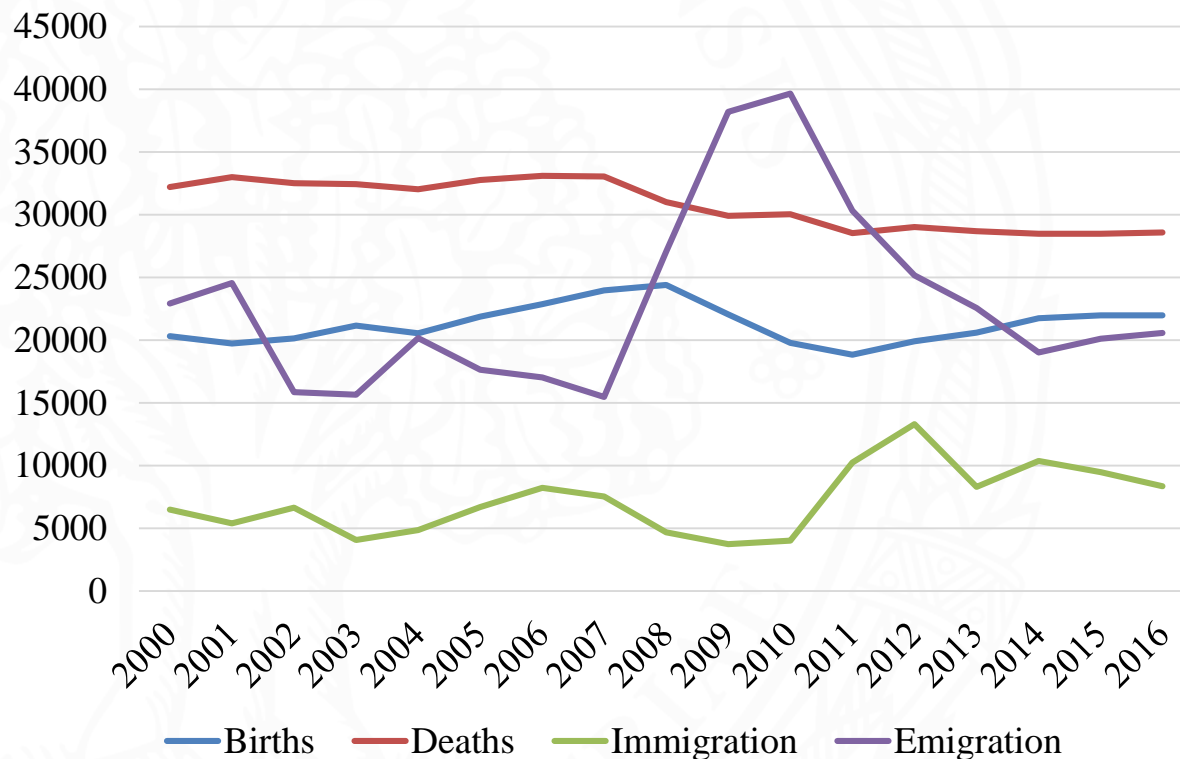
Resident population in Latvia (1800-2017)



**LATVIJAS
UNIVERSITĀTE**
ANNO 1919

UNIVERSITY OF LATVIA

Population by factors (2000-2016)



in 2016:
births: 21 968
deaths: 28 580
natural incr.: - 6 612
immigration: 8 345
emigration: 20 574
net migration: - 12 229

Labour market data sources

Short-term statistics:

monthly, quarterly, annual – Labour Force Survey (LFS)

quarterly - Labour Costs Survey

monthly data - State Revenue Service

Annual statistics:

annual surveys (source of Structural Business Statistics - SBS)

LFS

Others:

EU Structure of Earnings Survey - SES (once in 4 years)

Population and Housing Census (till 2021 – once in 10 years)

LFS in Latvia

Started in November 1995

From 1995 until 2001 was conducted twice a year (in May and November)

From 2002 - continuous survey

Publication of survey results:

Monthly

Quarterly

Yearly



LATVIJAS
UNIVERSITĀTE
ANNO 1919

UNIVERSITY OF LATVIA

LFS in Latvia (2)

Sample size in 2016

29 952 dwellings included in the sample

41.1 thsd. persons were interviewed of which 29.8 thsd. aged 15-74



LATVIJAS
UNIVERSITĀTE
ANNO 1919

UNIVERSITY OF LATVIA

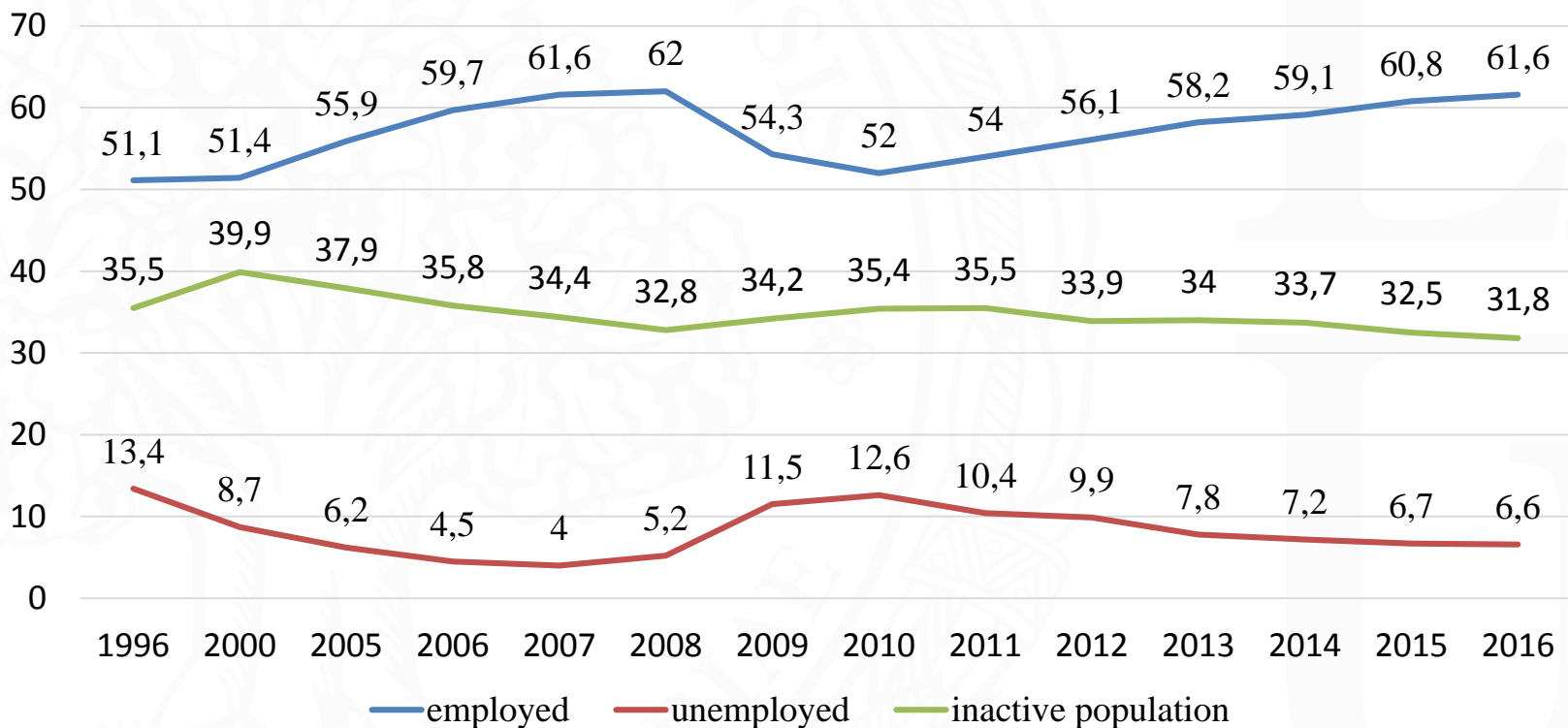
LFS in Latvia (3)

The main indicators of LFS for persons aged 15-74:

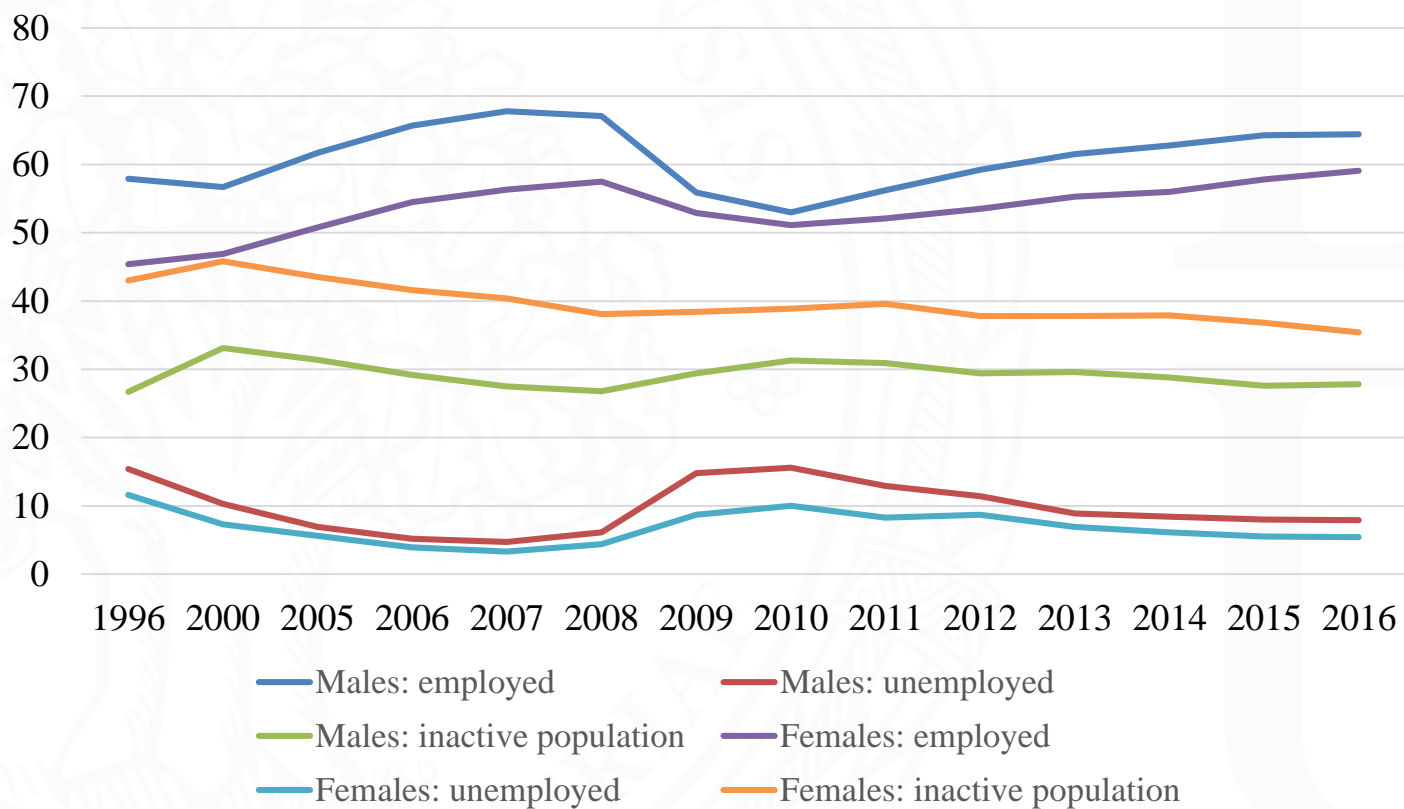
- demographic characteristics
- employment (main job, hours worked, occupation, economic activity, atypical work, second job)
- unemployment (duration of search for employment, work experience in the last job, methods used to find work)
- inactive population (reason for not seeking work)
- education



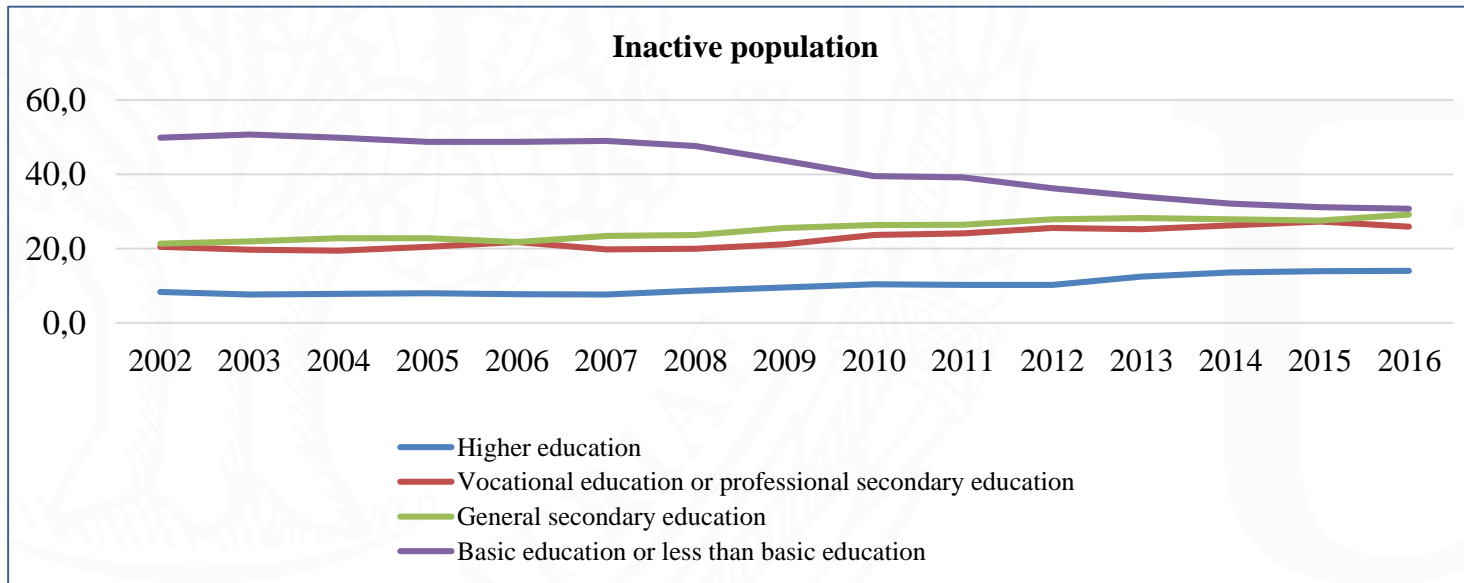
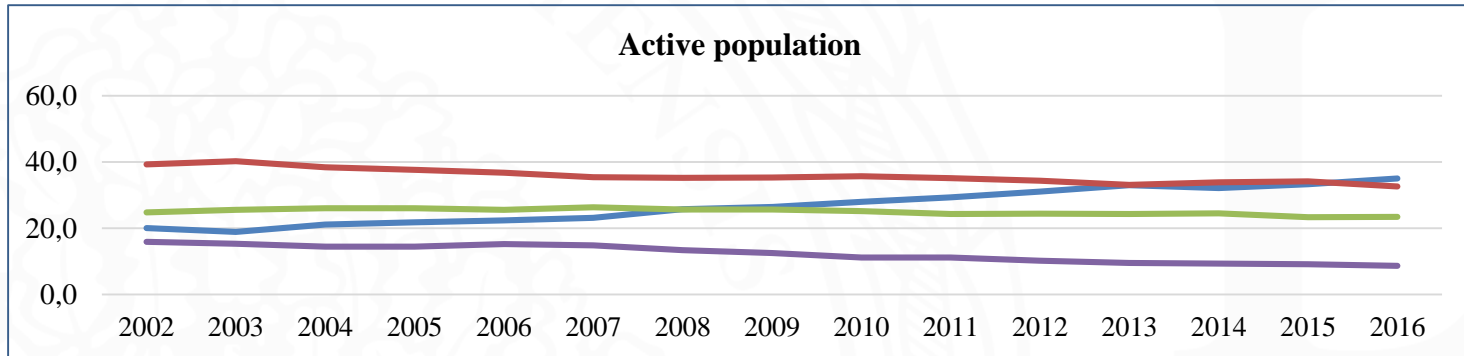
Employment and unemployment rate among persons aged 15-74, % (LFS)



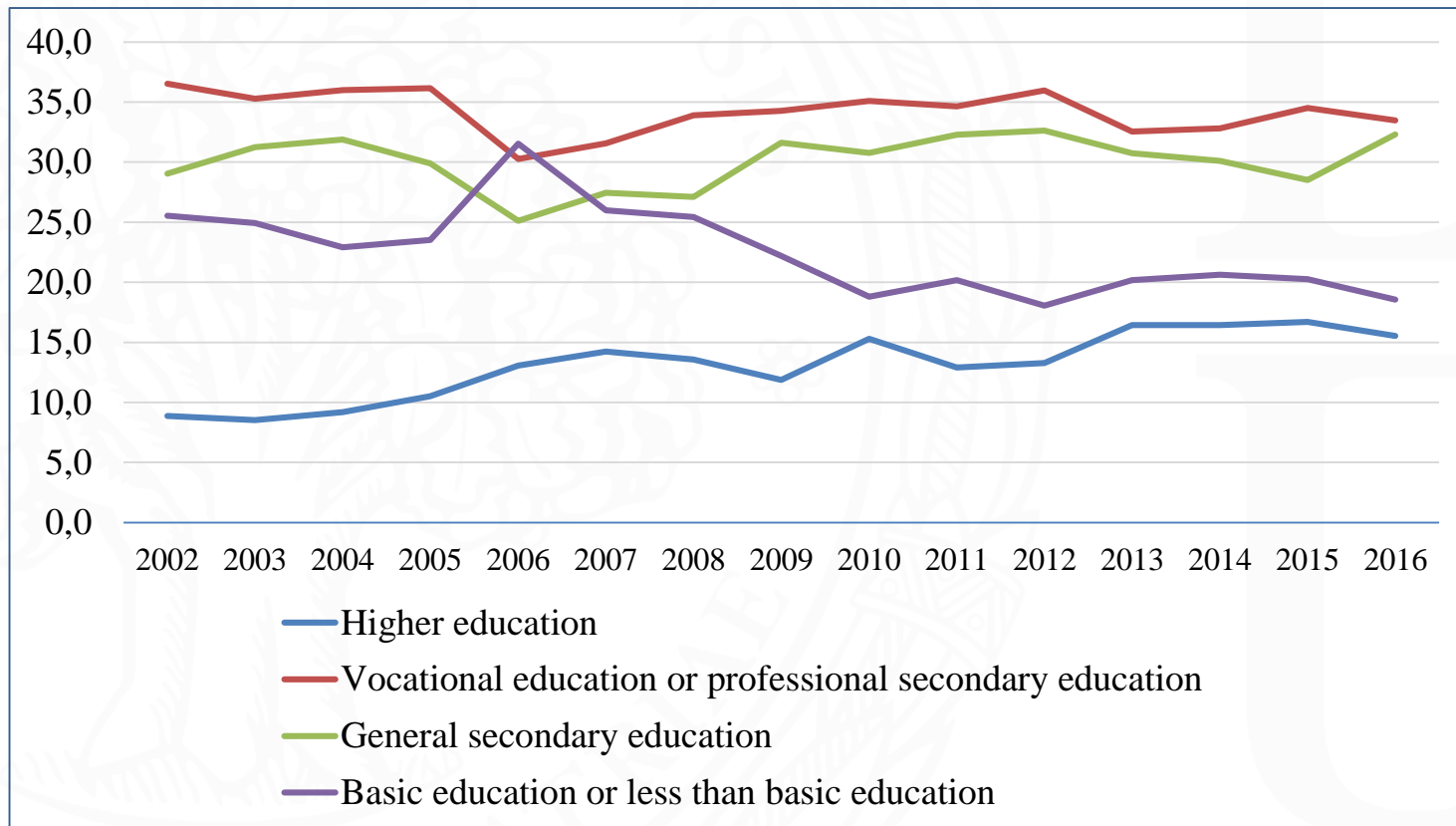
Employment and unemployment rate by sex, in age 15-74, % (LFS)



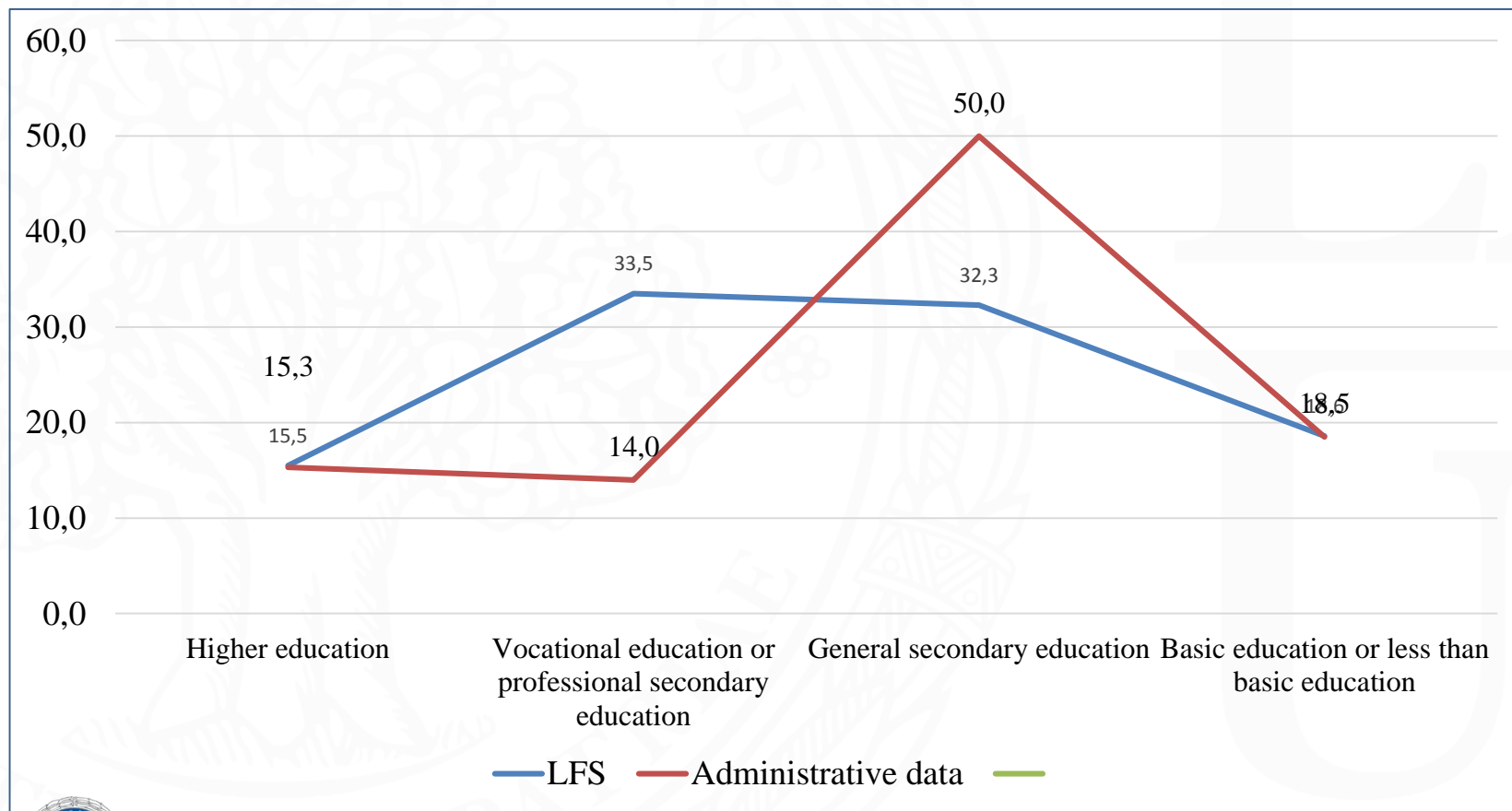
Population by labour status and education (2002-2016), %, LFS



Educational level for unemployed population (2002-2016), %, LFS



Educational level for unemployed persons in 2016 (administrative data + LFS), %



Quarterly Labour Costs Survey

Long history – modified several times; the last significant changes when Latvia joined EU in 2004

Sample size – 7.5 thsd enterprises

(8.2% of all enterprises; 44.3% of sample frame)

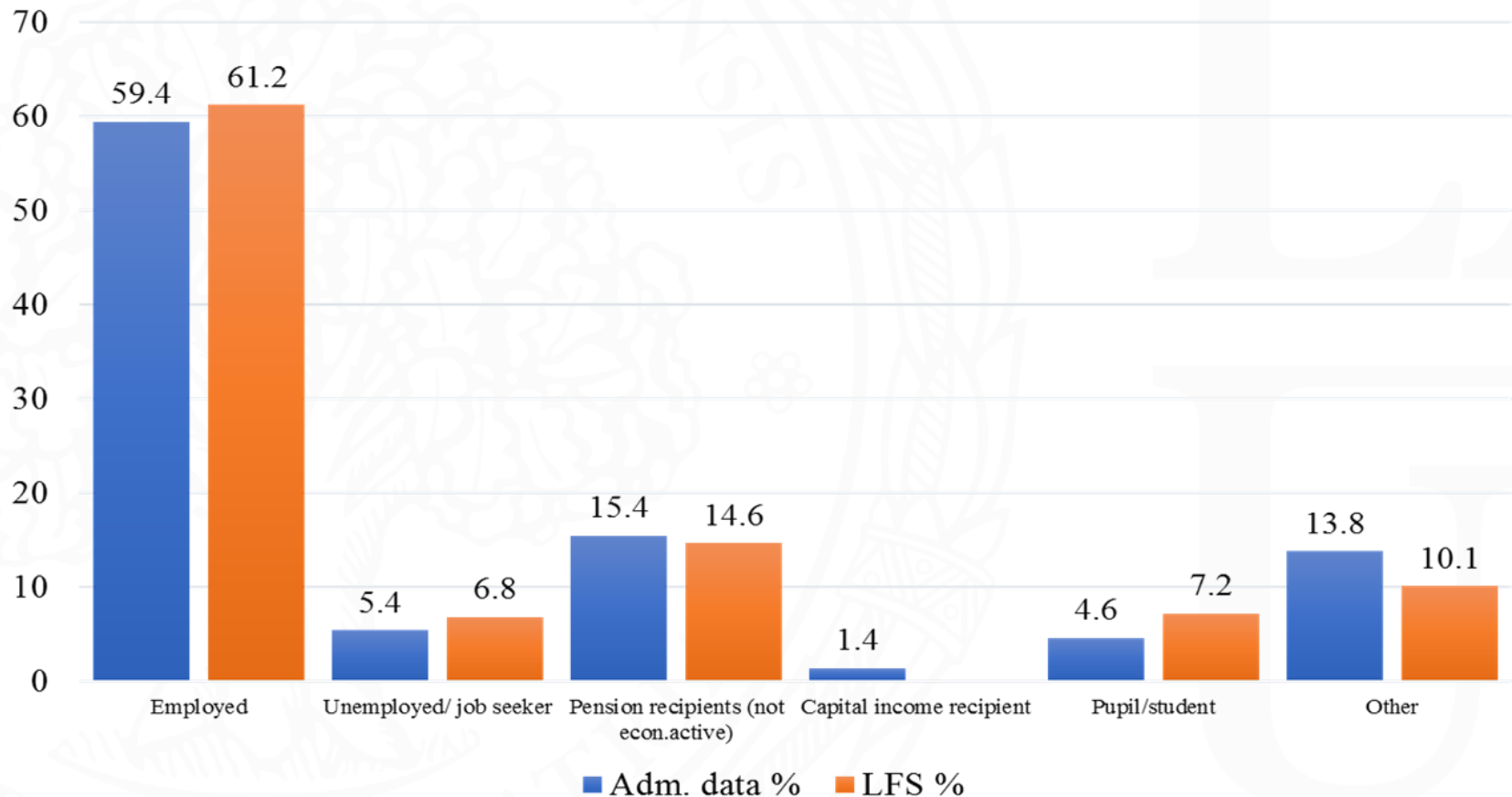
- public sector and large private companies - census (3.5% of enterprises)
- private companies with number of employees 7-49 – sample (15.1% of enterprises)
- private companies with number of employees 1-6 - administrative data and estimates (81.4% of enterprises)

Administrative data sources in Latvia used for labour market evaluation

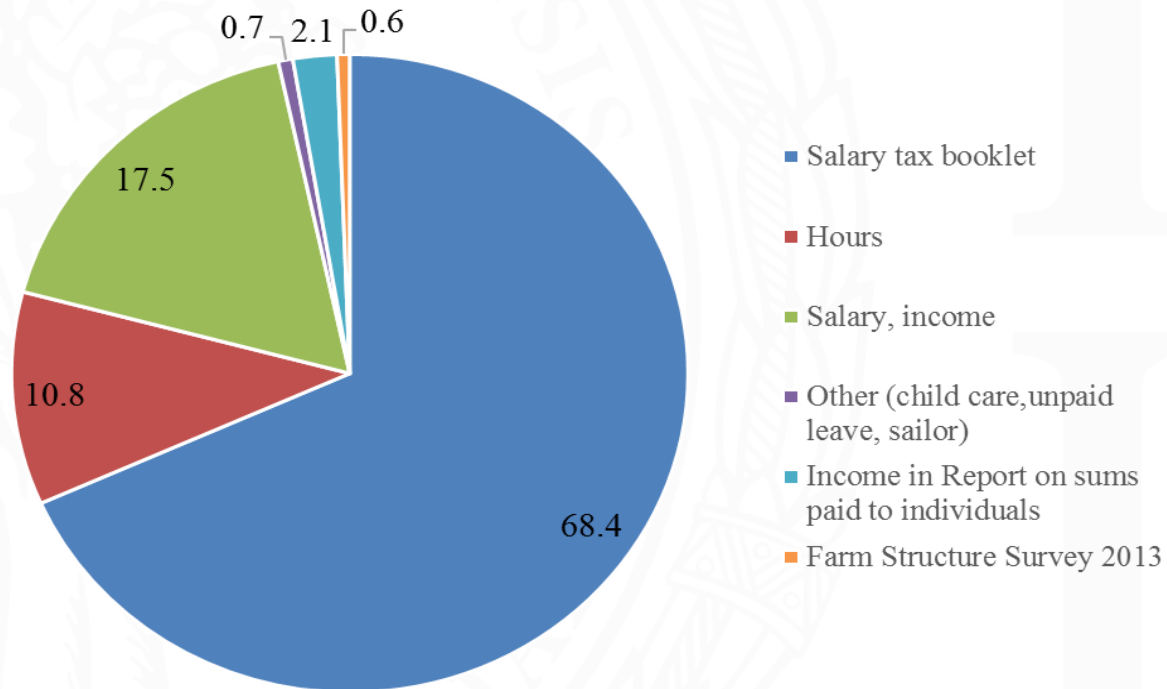
- State Revenue Service (SRS)
- Population Register (Office of Citizenship and Migration Affairs)
- State Employment Agency
- State Social Insurance Agency
- Ministry of Education and Science
- State Land Service
- Statistical Business Register on enterprises
- Database of legal and actual enterprises www.firmas.lv



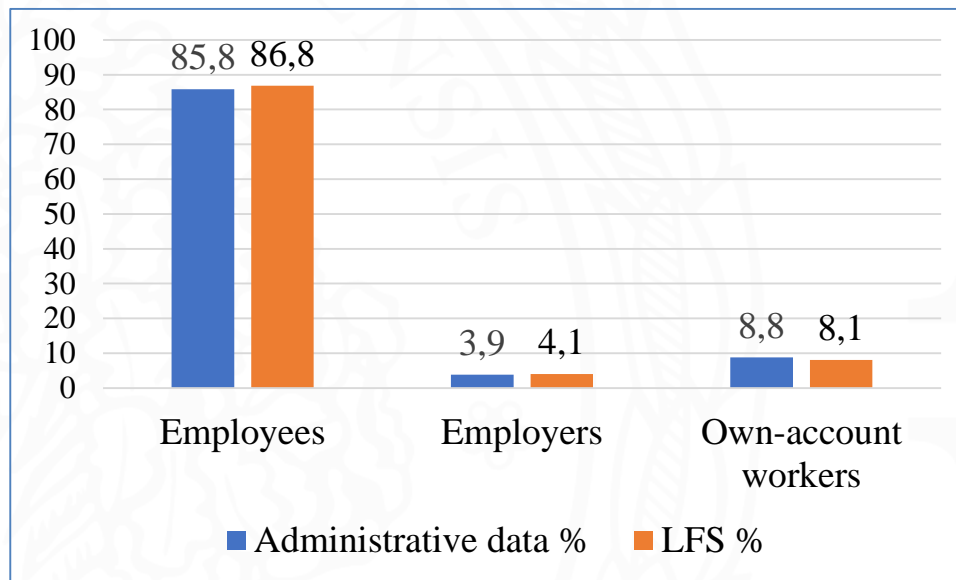
Economical activity of population in administrative data sources and LFS (January 1st 2016)



Distribution of employed persons by criterion/source of data, % (January 1st 2016)



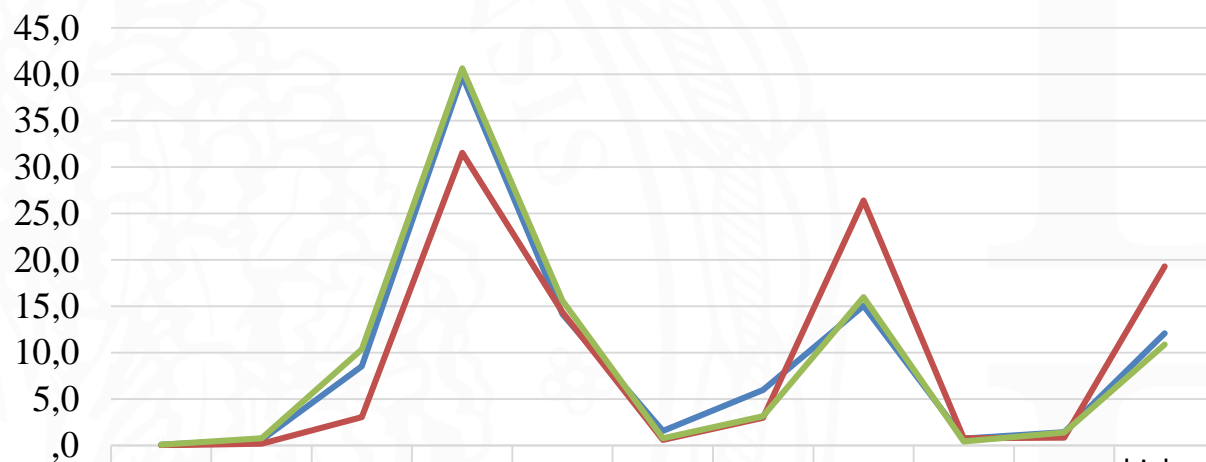
Status in employment (administrative data + LFS) (January 1, 2016)



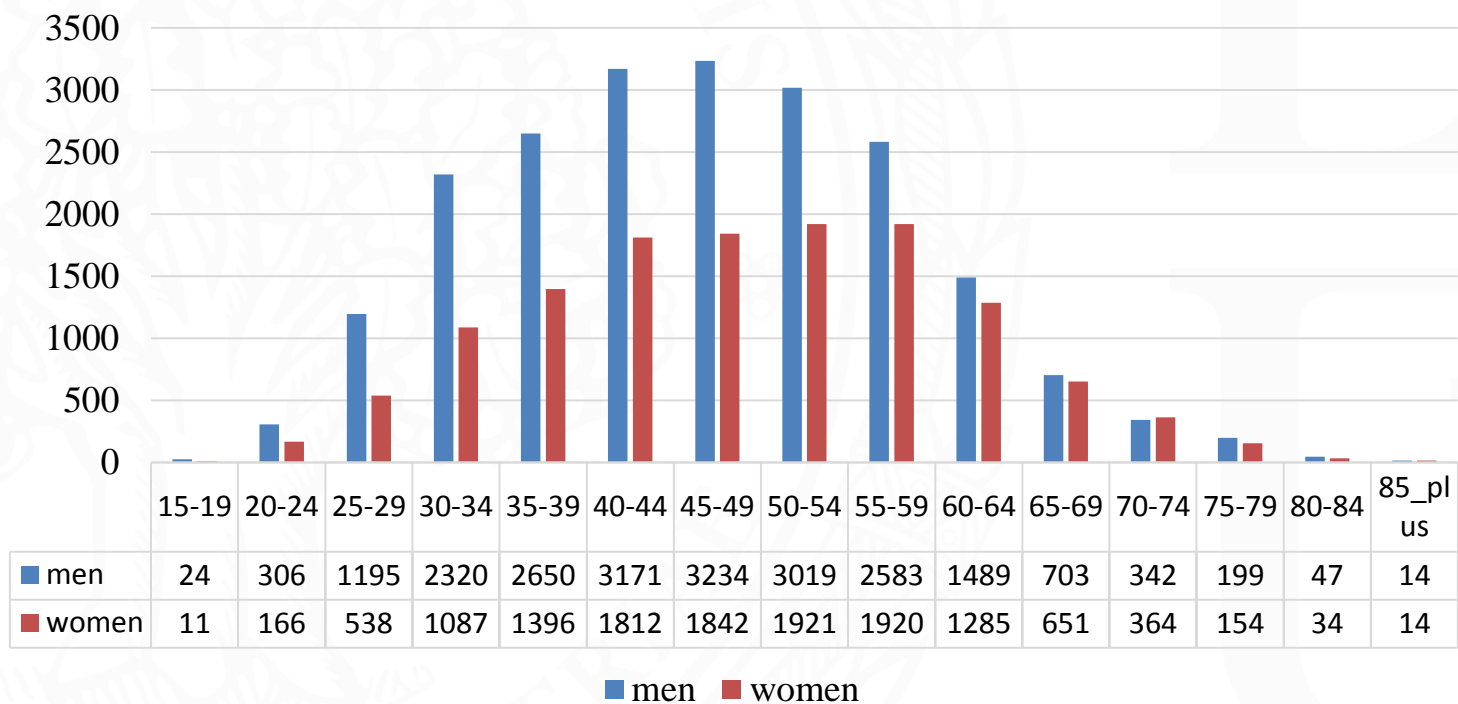
	Administrative data		LFS	
	Count	%	Count	%
Employees	759377	85.8	776469	86.8
Employers	34491	3.9	36291	4.1
Own-account workers	78084	8.8	72384	8.1
Others	13570	1.5	9474	1.1
Total (+15)	885522	100	894618	100



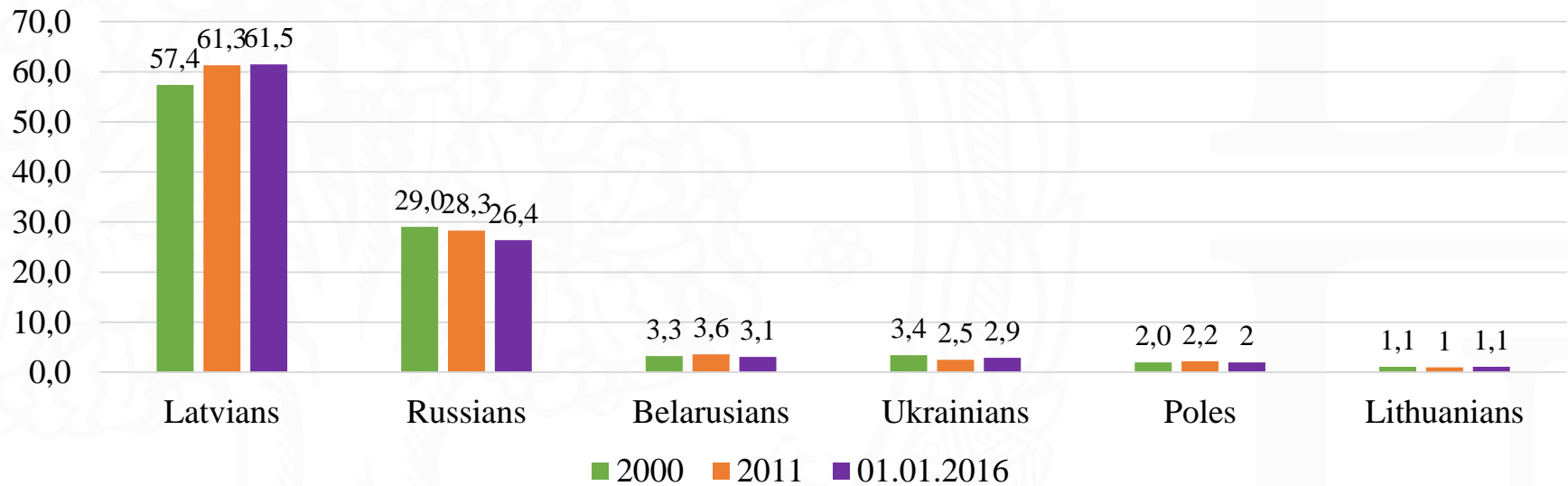
Educational attainment for employees, employers and self-account workers (adm.data 2016, %)



Employers by age groups and sex (2016, absolute count)



Distribution of EMPLOYERS by ethnicity in Latvia (Population Census 2000, 2011 and administrative data 2016)



Conclusions

1. There are huge opportunities to analyse the data on employment and education
2. Administrative data are of sufficient quality to identify employed persons
3. Administrative data on employment doesn't cover those who work without job contracts and doesn't pay taxes («shadow economy»)
4. The higher educational level is important factor to be as an employer



Paldies!
Thank you!



LATVIJAS
UNIVERSITĀTE
ANNO 1919

UNIVERSITY OF LATVIA